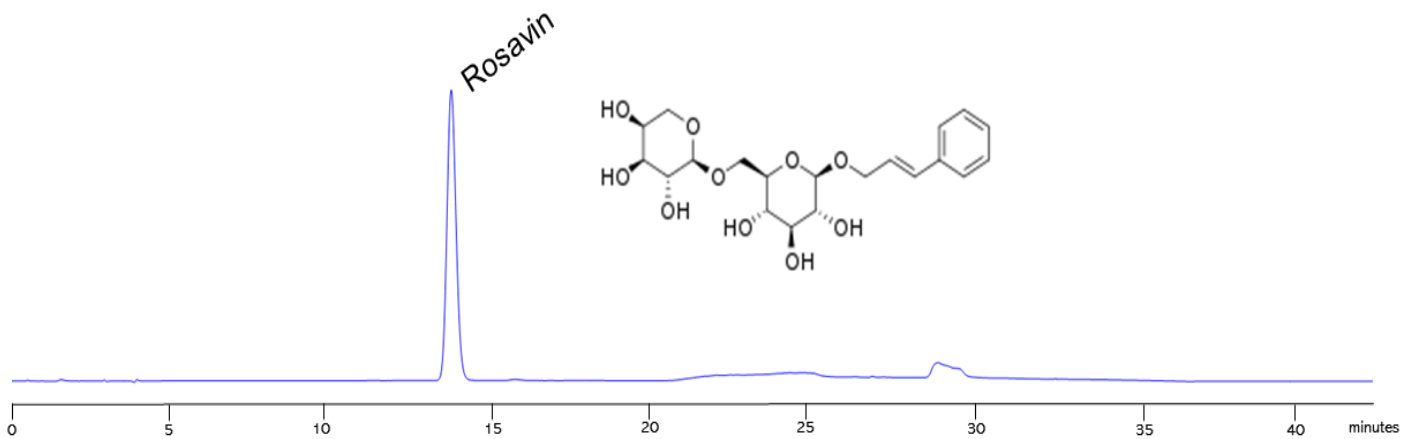
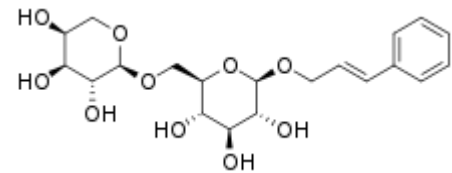


Rosavin

로사빈

KR23081801

Rosavin



|             |   |
|-------------|---|
| Column      | : YMC-Triart C18 (5 $\mu$ m, 12nm)<br>250 x 4.6 mmI.D   |
| Eluent      | : A) D.W B) Acetonitrile<br>20%B (0-15 min), 20-70%B (15-20 min), 70%B (20-25 min), 70-20%B (25-30 min), 20%B(30-40min) |
| Flow rate   | : 1.0 mL/min  |
| Detection   | : UV at 250 nm  |
| Temperature | : 30 $^{\circ}$ C   |
| Injection   | : 10 $\mu$ L (100 $\mu$ g/mL)   |