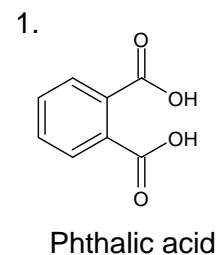
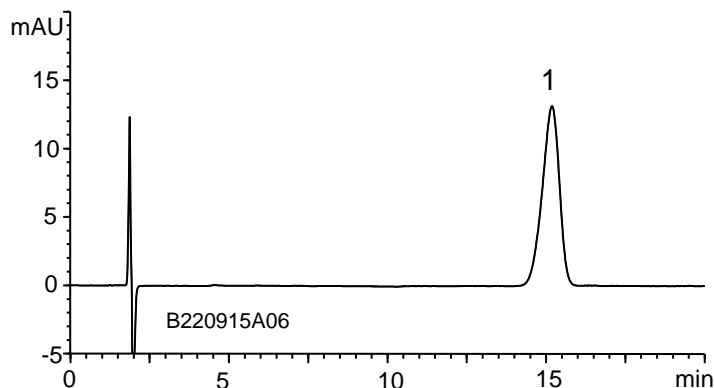


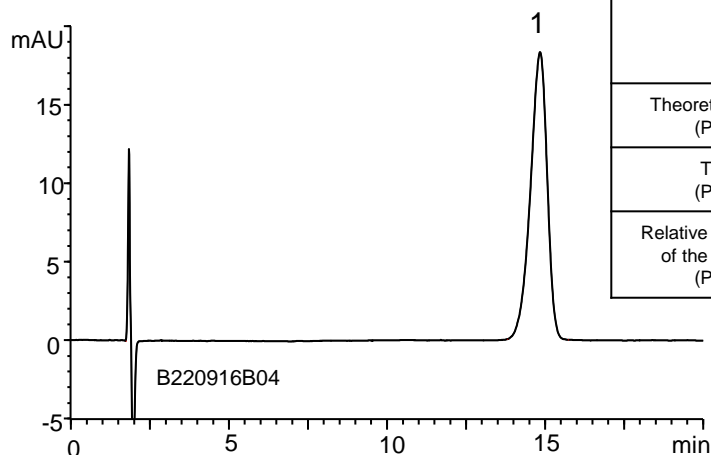
ヒプロメロースフタル酸エステル (薬局方記載条件)
Hypromellose Phthalate

B220926A

(A) Sample solution*1 (2.0 mg/mL Hypromellose phthalate)



(B) Standard solution*1 (0.05 mg/mL Phthalic acid)



	System suitability requirement (JP)	System suitability requirement (USP)	Result
Theoretical plate number (Phthalic acid)	≥ 2500	-	3800
Tailing factor (Phthalic acid)	≤ 1.5	-	0.86
Relative standard deviation of the peak area (n=5) (Phthalic acid)	≤ 1.0%	≤ 1.0%	0.35%

Column : YMC-Triart Prep C18-S (7 μm, 12 nm)
250 X 4.6 mm I.D.
Eluent : acetonitrile/0.1% trifluoroacetic acid (10/90)
Flow rate : 2.0 mL/min
Temperature : 20°C
Detection : UV at 235 nm
Injection : 10 μL

(The draft for the Japanese Pharmacopoeia (JP); Purity (3) Phthalic acid)

(The United States Pharmacopoeia (USP) 42nd; Limit of free phthalic acid)

*1 All standard and sample solutions were prepared from Hypromellose phthalate supplied as a reagent for laboratory use.