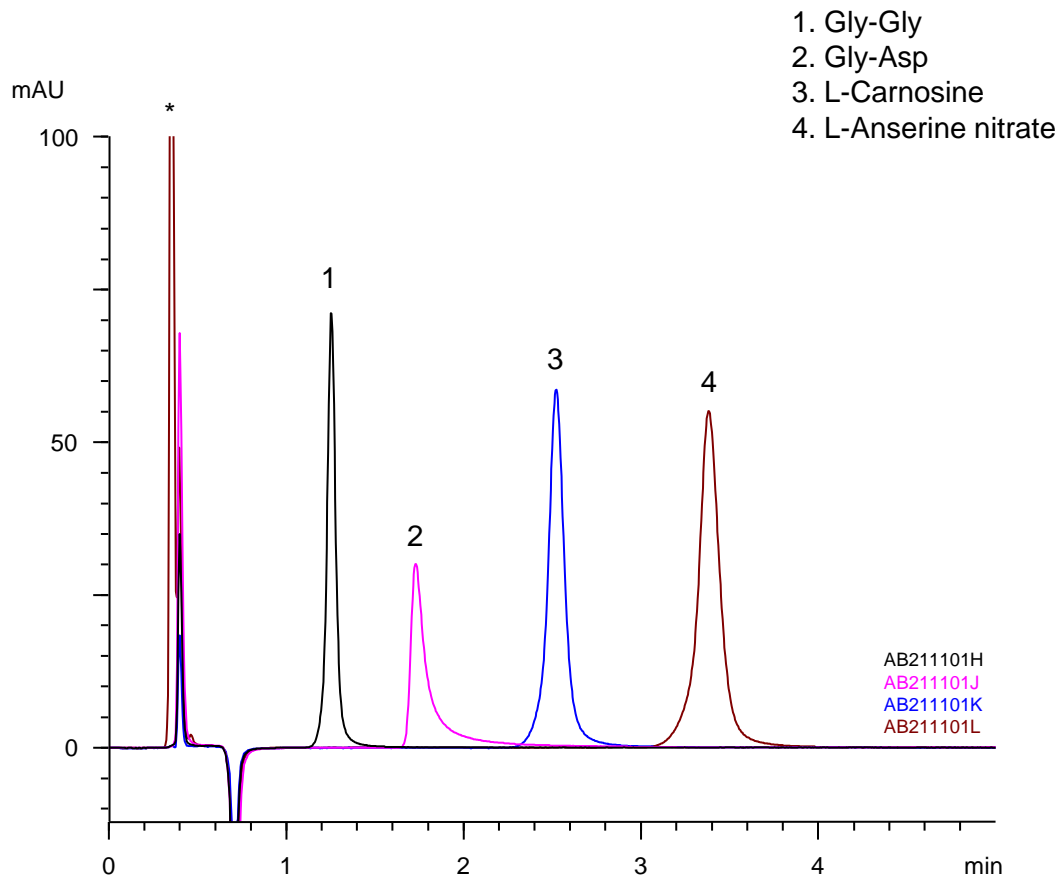


親水性ジペプチド
Hydrophilic dipeptides

AB211216A



* Nitrate (derived from L-Anserine nitrate)

Column	: YMC-Triart SIL (3 μ m, 12 nm) 50 X 2.1 mmI.D.
Eluent	: 40 mM HCOONH ₄ (pH 6.5)/acetonitrile (25/75)
Flow rate	: 0.4 mL/min
Temperature	: 40°C
Detection	: UV at 210 nm
Injection	: 0.5 μ L (0.1 mg/mL)