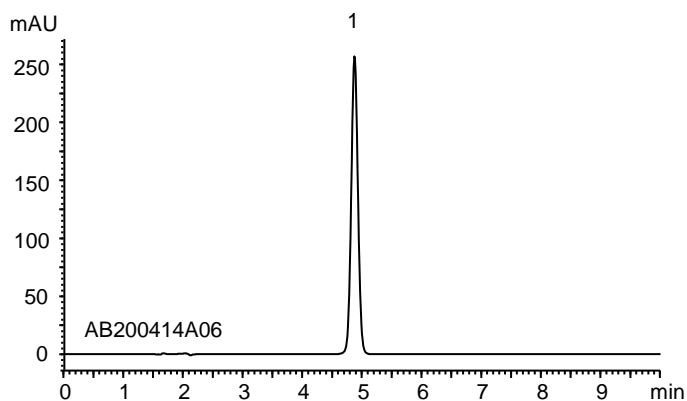


エソメプラゾールマグネシウム (米国薬局方記載条件)  
Esomeprazole Magnesium (The United States Pharmacopeia)

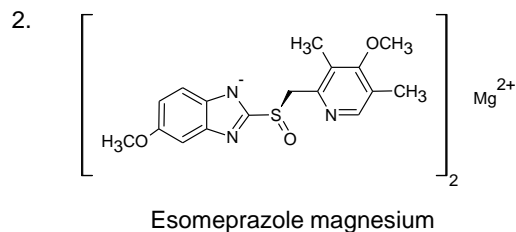
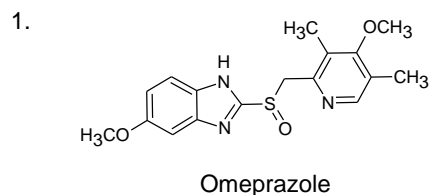
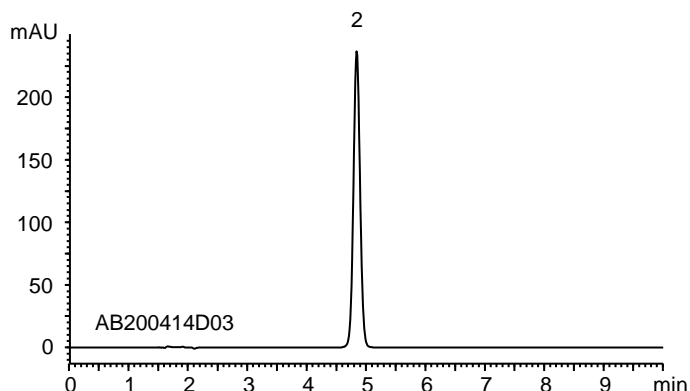
AB200829A

(A) Standard solution\*1  
(0.05 mg/mL Omeprazole)



	System suitability requirement	Result
Theoretical plate number (Omeprazole)	$\geq 2000$	9400
Relative standard deviation of the peak area (n=6) (Omeprazole)	$\leq 2.0\%$	0.36%

(B) Sample solution\*1  
(0.05 mg/mL Esomeprazole magnesium)



Column : YMC-Triart C8 (5  $\mu$ m, 12 nm)  
150 X 4.6 mm I.D.

Eluent : phosphate buffer (pH 7.6)\*2/acetonitrile (13/7)

\*2 Dissolve 4.472 g of  $\text{Na}_2\text{HPO}_4 \cdot 2\text{H}_2\text{O}$  and 0.725 g of  $\text{NaH}_2\text{PO}_4$  in 1000 mL water, dilute 250 mL of this solution with water to 1000 mL and adjust pH 7.6 with  $\text{H}_3\text{PO}_4$

Flow rate : 1.0 mL/min

Temperature : 25°C

Detection : UV at 280 nm

Injection : 20  $\mu$ L

(The United States Pharmacopeia 42nd; ASSAY)

\*1 All standard and sample solutions were prepared from Omeprazole and Esomeprazole magnesium supplied as a reagent for laboratory use.