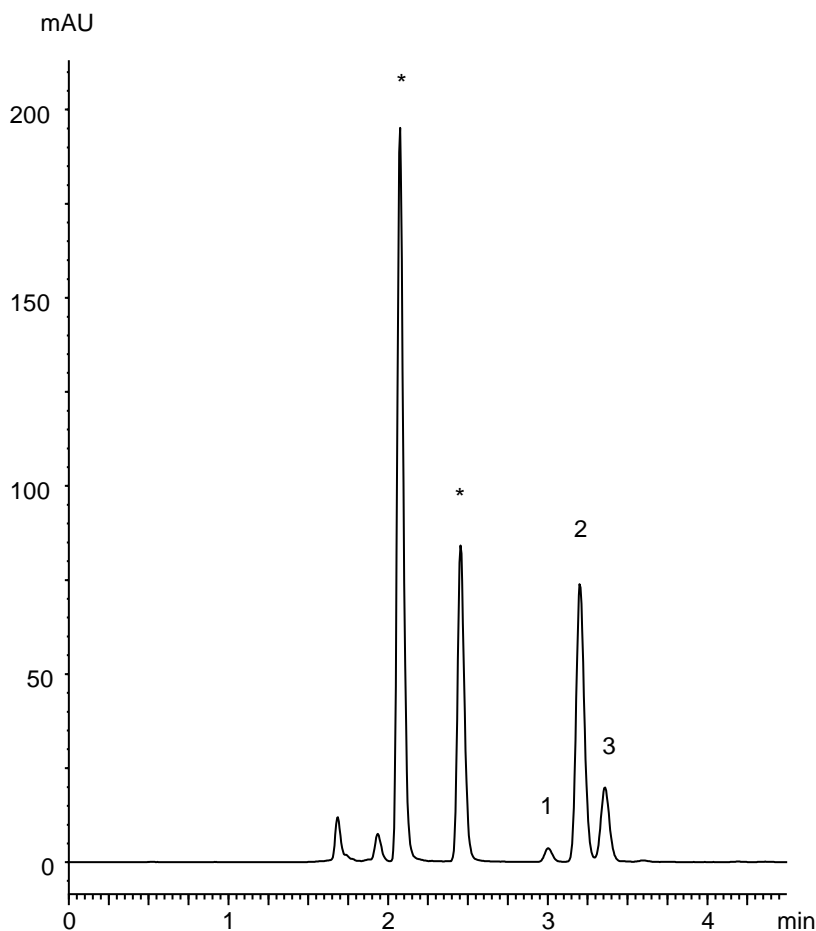


市販鎮痒消炎薬

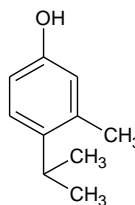
A commercial anti-itch medication

AB200109L



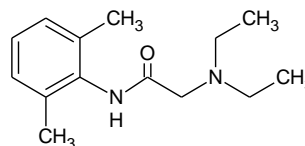
\* Peaks derived from pharmaceutical additives

1.



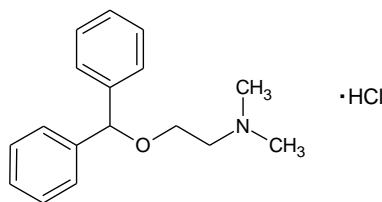
4-Isopropyl-3-methylphenol

2.



Lidocaine

3.



Diphenhydramine hydrochloride

Column	: YMC-Triart Bio C18 (3 μm, 30 nm) 150 X 4.6 mmI.D.
Eluent	: 10 mM HCOONH <sub>4</sub> -NH <sub>3</sub> (pH 9.6)/acetonitrile (40/60)
Flow rate	: 1.0 mL/min
Temperature	: 37°C
Detection	: UV at 254 nm
Injection	: 10 μL (0.01-0.2 mg/mL)
Sample	: 50% acetonitrile extract of a commercially available anti-itch medication