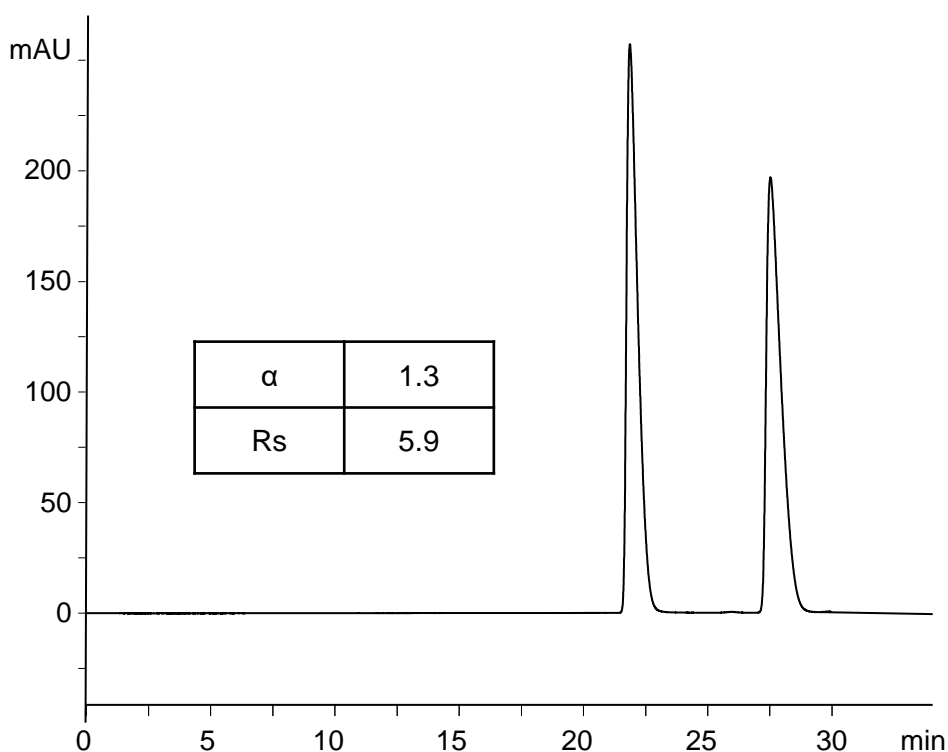
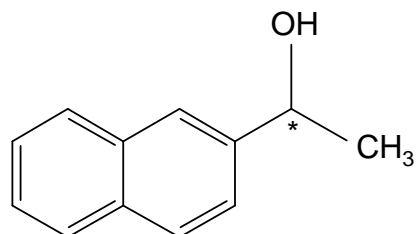


1-(2-ナフチル)エタノール

1-(2-Naphthyl)ethanol

AG190613D



Column : CHIRAL ART Cellulose-SJ (5 μ m)
250 X 4.6 mm I.D.

Eluent : *n*-hexane/2-propanol (95/5)

Flow rate : 1.0 mL/min

Temperature : 25°C

Detection : UV at 270 nm

Injection : 10 μ L (1 mg/mL)