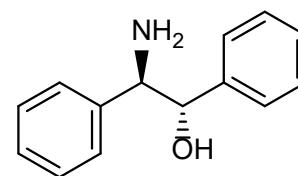
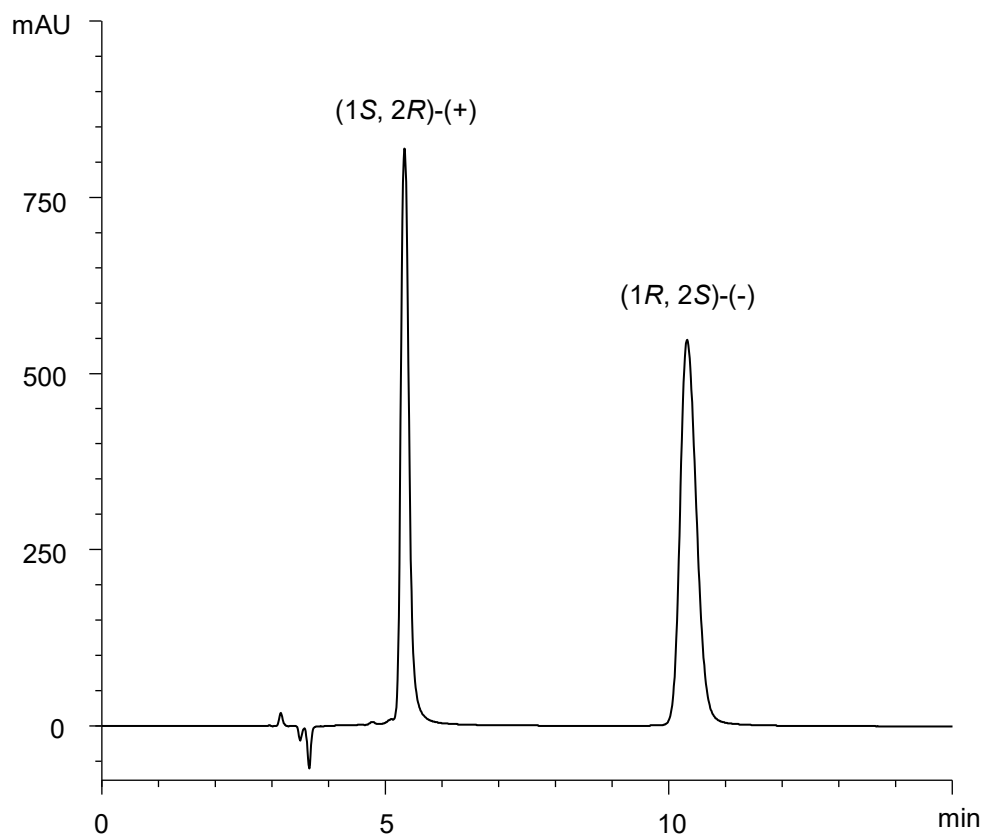


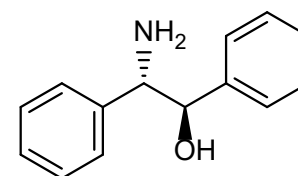
2-アミノ-1,2-ジフェニルエタノール

2-Amino-1,2-diphenylethanol

E170907B



(1S, 2R)-(+)



(1R, 2S)-(-)

α	3.0
R_s	12.4

Column : CHIRALART Amylose-C (5 μ m)
250 X 4.6 mm I.D.

Eluent : *n*-hexane/ethanol/diethylamine (50/50/0.1)

Flow rate : 1.0 mL/min

Temperature : 25°C

Detection : UV at 220 nm

Injection : 10 μ L (0.5 mg/mL)

Sample : Supplied by Tokyo Chemical Industry Co., Ltd.