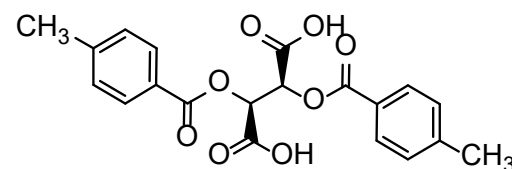
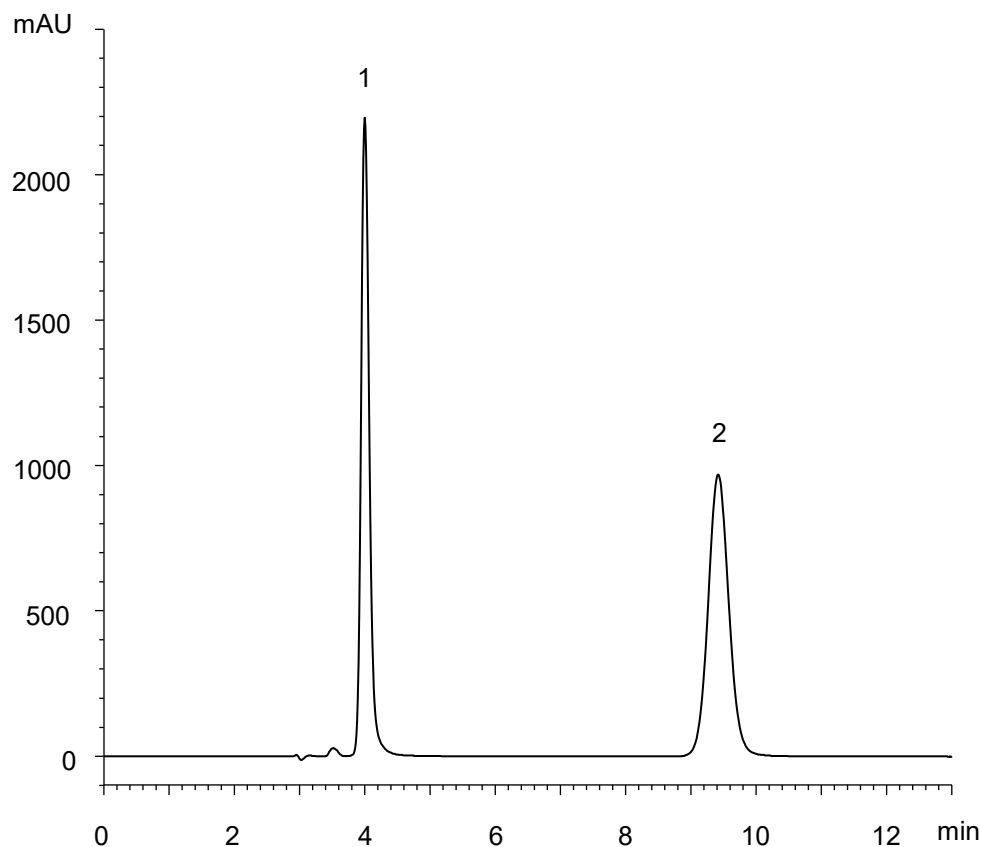


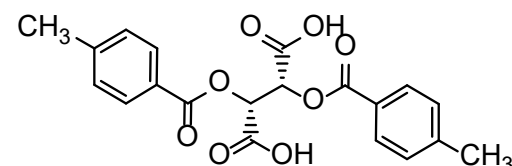
ジ-*p*-トルオイル酒石酸
Di-*p*-toluoyltartaric Acid

E170912A



1

(+)-Di-*p*-toluoyl-D-tartaric Acid



2

(-)-Di-*p*-toluoyl-L-tartaric Acid

α	6.6
R_s	13.2

Column : CHIRAL ART Cellulose-SC (5 μ m)
250 X 4.6 mm I.D.
Eluent : *n*-hexane/2-propanol/trifluoroacetic acid (60/40/0.1)
Flow rate : 1.0 mL/min
Temperature : 25°C
Detection : UV at 235 nm
Injection : 10 μ L (0.5 mg/mL)