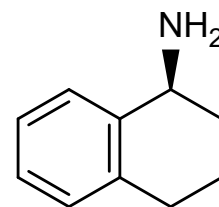
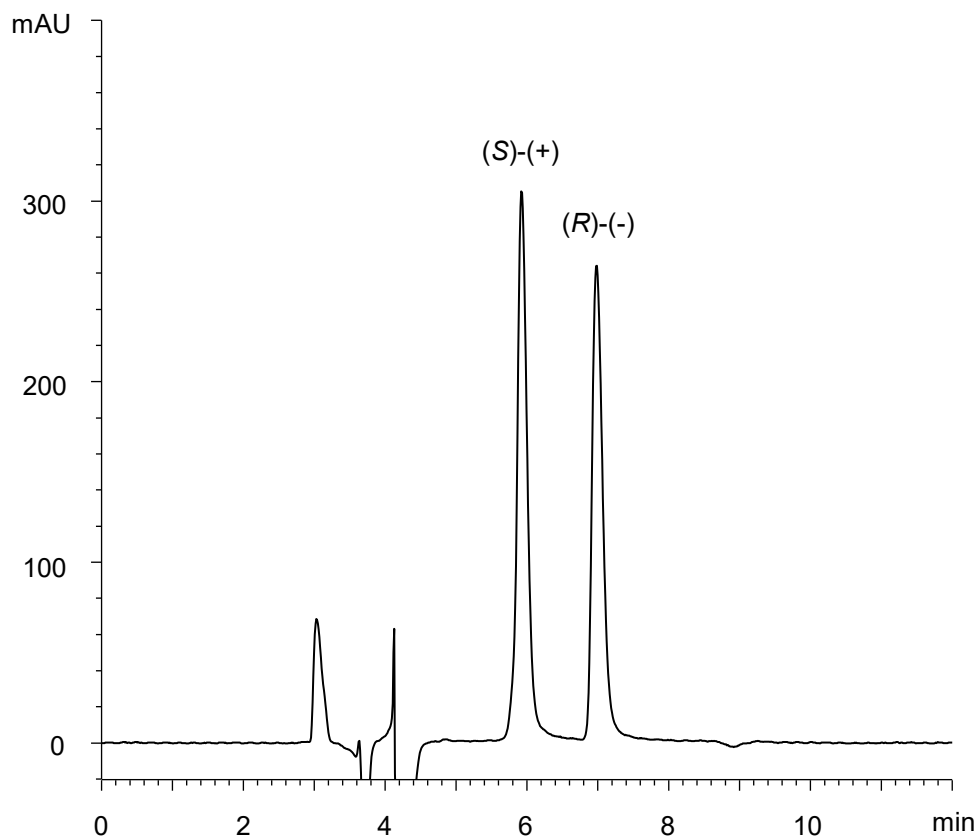


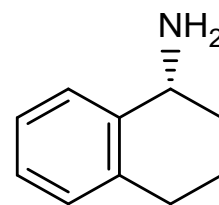
1,2,3,4-テトラヒドロ-1-ナフチルアミン

1,2,3,4-Tetrahydro-1-naphthylamine

E171025B



(S)-(+)



(R)-(-)

$\alpha$	1.3
$R_s$	3.8

Column : CHIRAL ART Cellulose-C (5  $\mu$ m)  
250 X 4.6 mm I.D.

Eluent : *n*-hexane/2-propanol/diethylamine (90/10/0.1)

Flow rate : 1.0 mL/min

Temperature : 25°C

Detection : UV at 220 nm

Injection : 10  $\mu$ L (0.5 mg/mL)

Sample : Supplied by Tokyo Chemical Industry Co., Ltd.