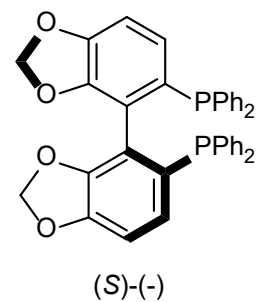
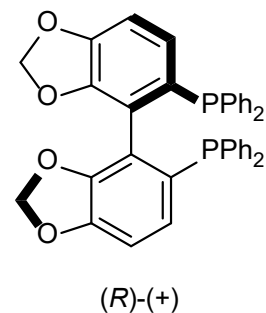
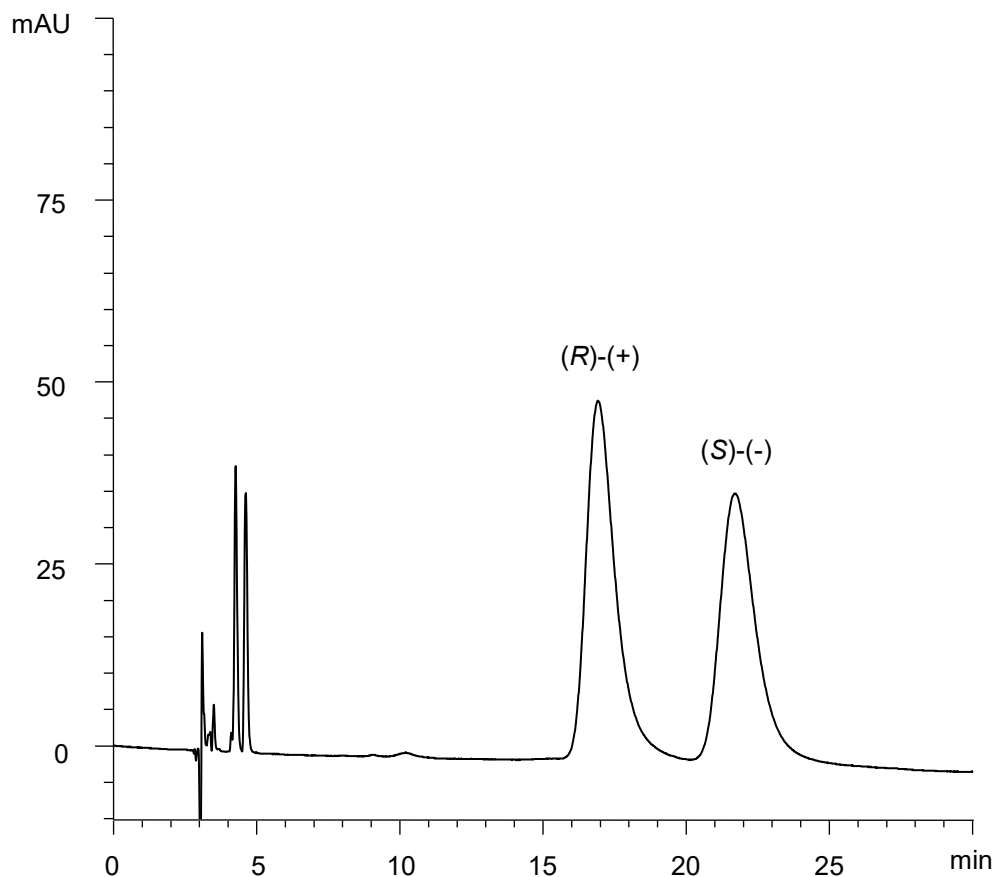


5,5'-ビス(ジフェニルホスフィノ)-4,4'-ビ-1,3-ベンゾジオキソール
5,5'-Bis(diphenylphosphino)-4,4'-bi-1,3-benzodioxole

E171218C



| | |
|----------|-----|
| α | 1.3 |
| R_s | 2.3 |

Column : CHIRAL ART Amylose-SA (5 μ m)
250 X 4.6 mm I.D.
Eluent : *n*-hexane/2-propanol (70/30)
Flow rate : 1.0 mL/min
Temperature : 25°C
Detection : UV at 210 nm
Injection : 20 μ L (0.025 mg/mL)