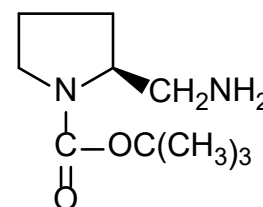
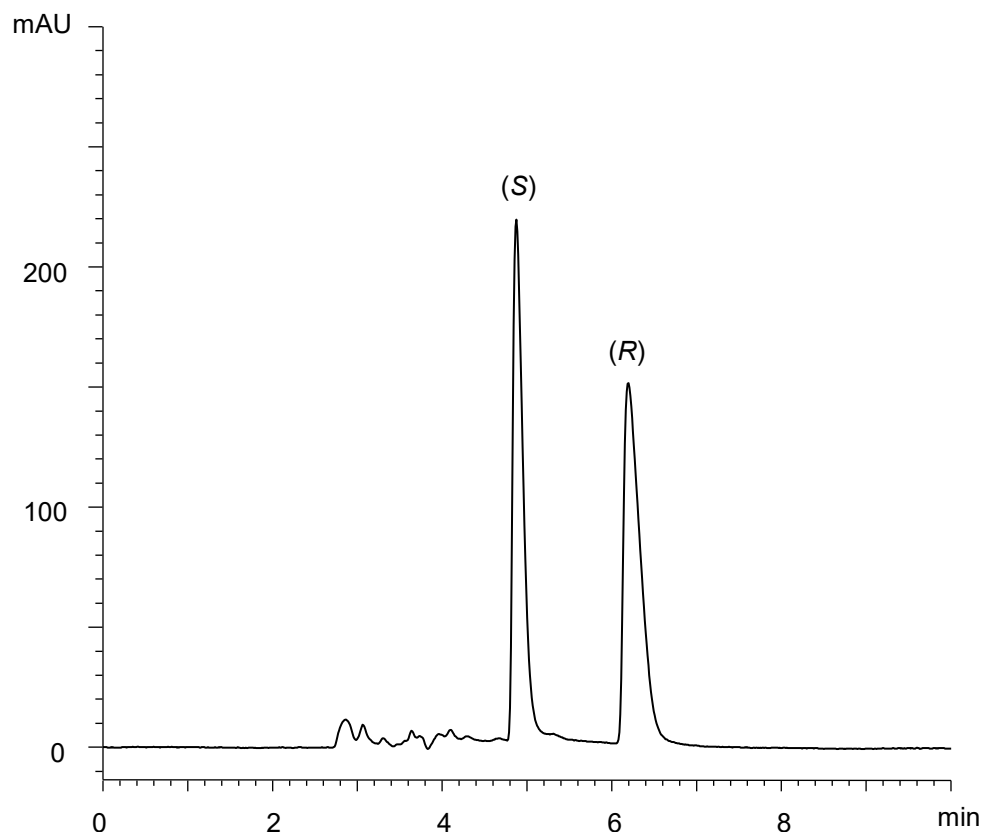


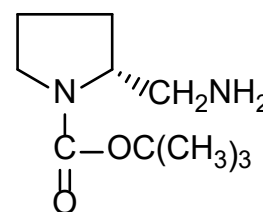
2-(アミノメチル)-1-(*tert*-ブトキシカルボニル)ピロリジン

2-(Aminomethyl)-1-(*tert*-butoxycarbonyl)pyrrolidine

E171219J



(S)



(R)

α	1.6
R_s	4.2

Column : CHIRAL ART Amylose-SA (5 μ m)
250 X 4.6 mm I.D.

Eluent : *n*-hexane/ethanol/diethylamine (75/25/0.1)

Flow rate : 1.0 mL/min

Temperature : 25°C

Detection : UV at 215 nm

Injection : 10 μ L (5 mg/mL)