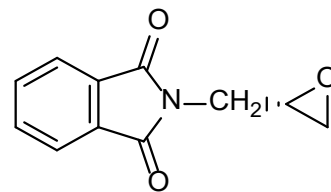
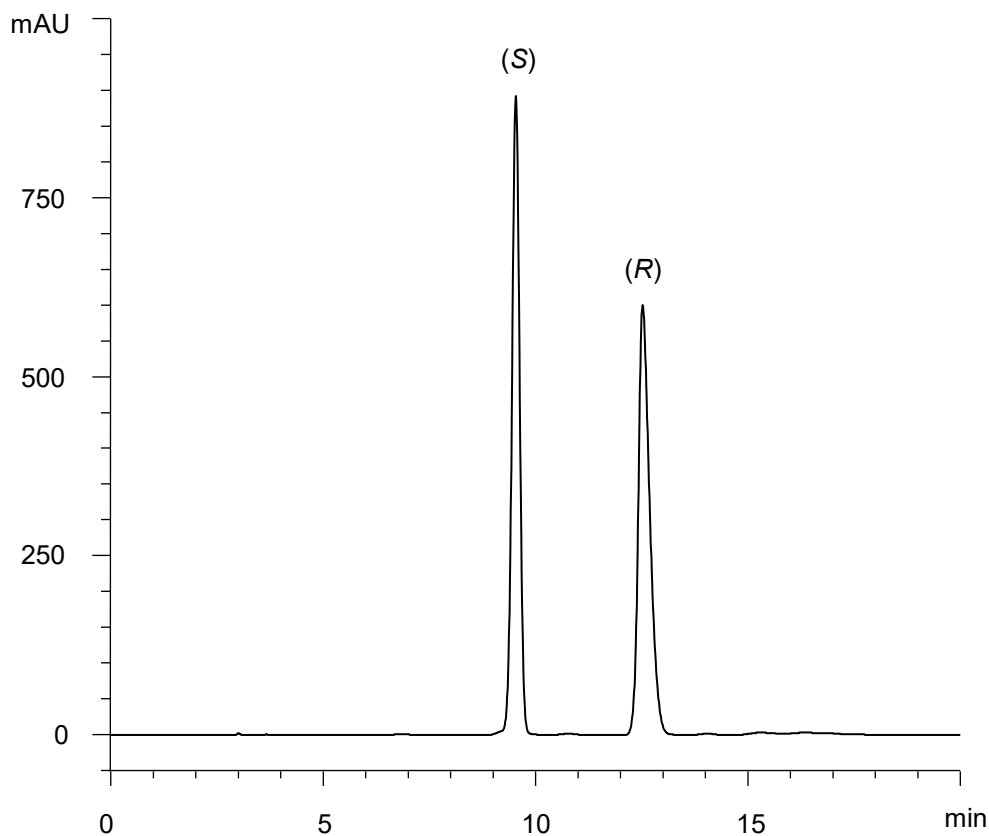


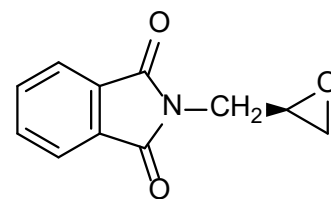
N-グリシジルフタルイミド

N-Glycidylphthalimide

E180509C



(S)



(R)

α	1.4
R_s	7.1

Column : CHIRAL ART Amylose-C (5 μ m)
250 X 4.6 mm I.D.

Eluent : *n*-hexane/2-propanol (80/20)

Flow rate : 1.0 mL/min

Temperature : 25°C

Detection : UV at 240 nm

Injection : 10 μ L (0.5 mg/mL)

Sample : Supplied by Tokyo Chemical Industry Co., Ltd.