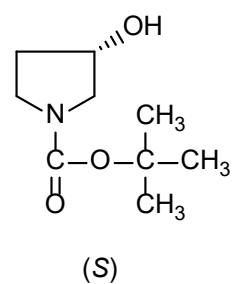
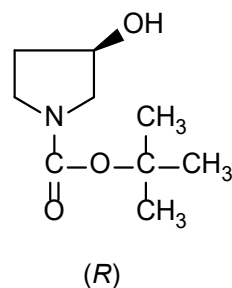
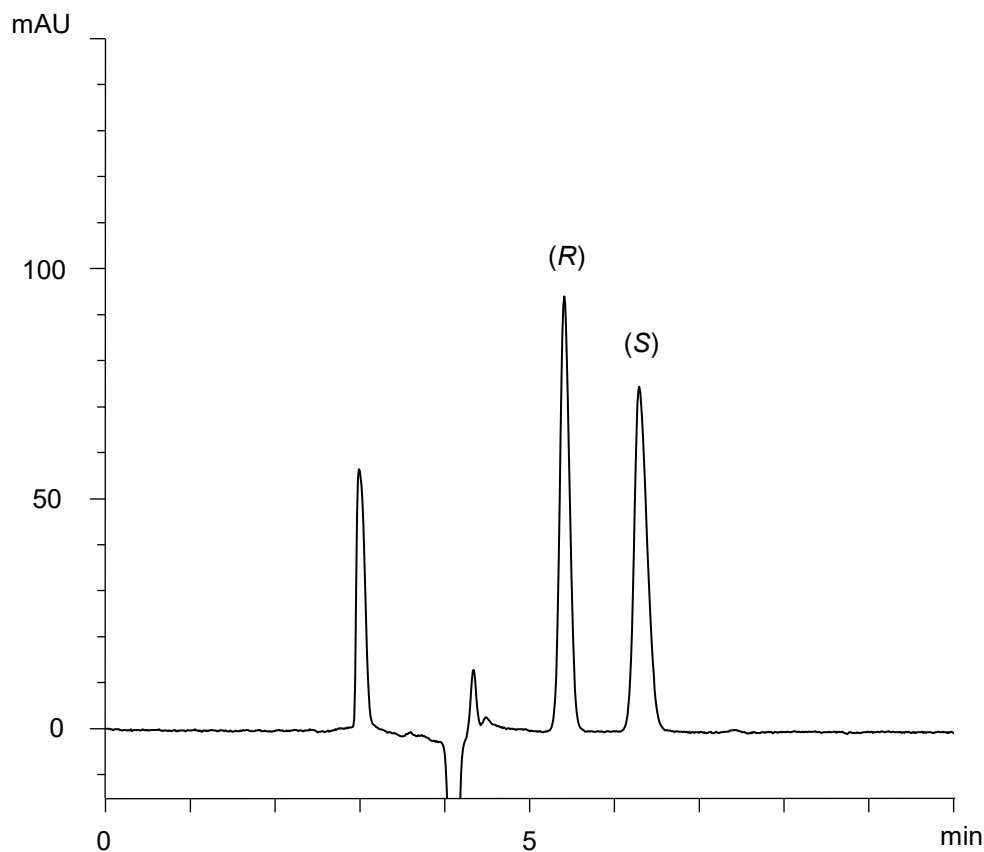


1-(*tert*-ブトキシカルボニル)-3-ピロリジノール

1-(*tert*-Butoxycarbonyl)-3-pyrrolidinol

E180515B



$\alpha$	1.3
$R_s$	3.3

Column : CHIRAL ART Amylose-C (5  $\mu$ m)  
250 X 4.6 mm I.D.

Eluent : *n*-hexane/ethanol/diethylamine (90/10/0.1)

Flow rate : 1.0 mL/min

Temperature : 25°C

Detection : UV at 215 nm

Injection : 20  $\mu$ L (2.5 mg/mL)

Sample : Supplied by Tokyo Chemical Industry Co., Ltd.