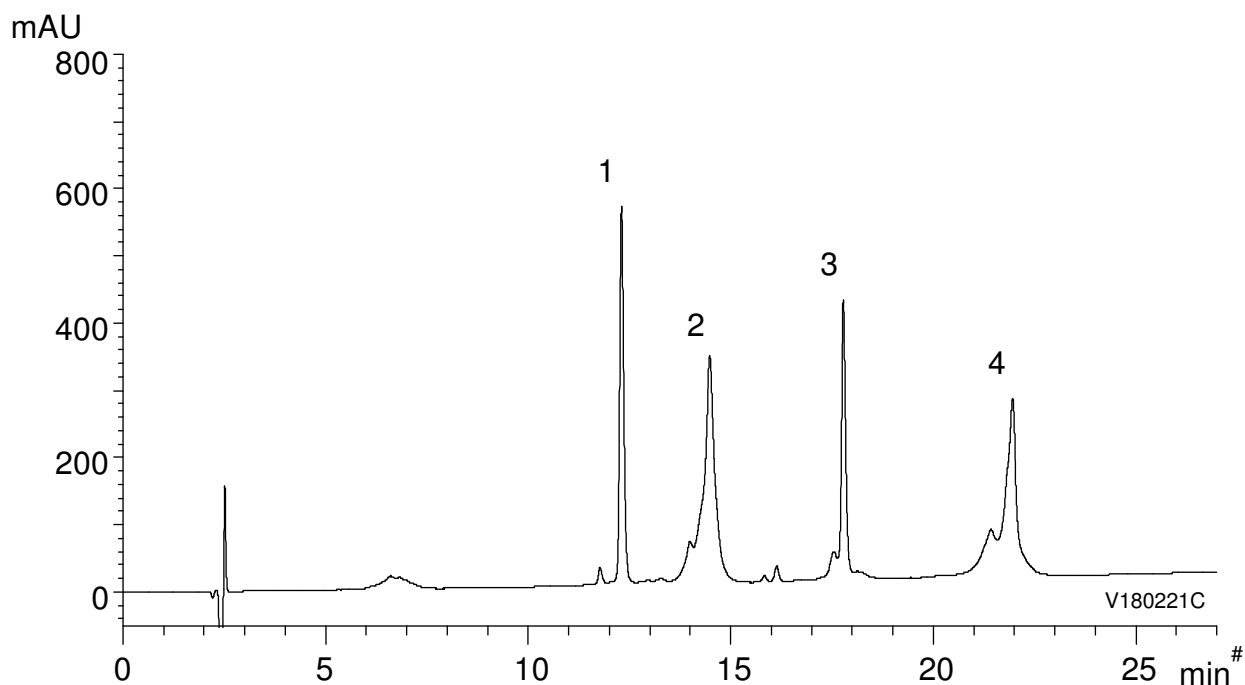


タンパク質 (MW 14,300 ~ 77,000)

Proteins (MW 14,300 ~ 77,000)

V180221C

- | | |
|---|-------------|
| 1. Lysozyme (Chicken egg white) | (MW 14,300) |
| 2. Conalbumin (Chicken egg white) | (MW 77,000) |
| 3. β -Lactoglobulin A (Bovine milk) | (MW 18,400) |
| 4. Ovalbumin | (MW 45,000) |



Column : YMC-Triart Bio C4 (5 μ m, 30 nm)
150 X 3.0 mm I.D.

Eluent : A) water/TFA (100/0.1)
B) acetonitrile/TFA (100/0.1)
20-60%B (0-27 min), 90%B (27-35 min)

Flow rate : 0.4 mL/min

Temperature : 70°C

Detection : UV at 220 nm

Injection : 10 μ L (0.15 ~ 0.60 mg/mL)