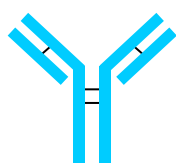
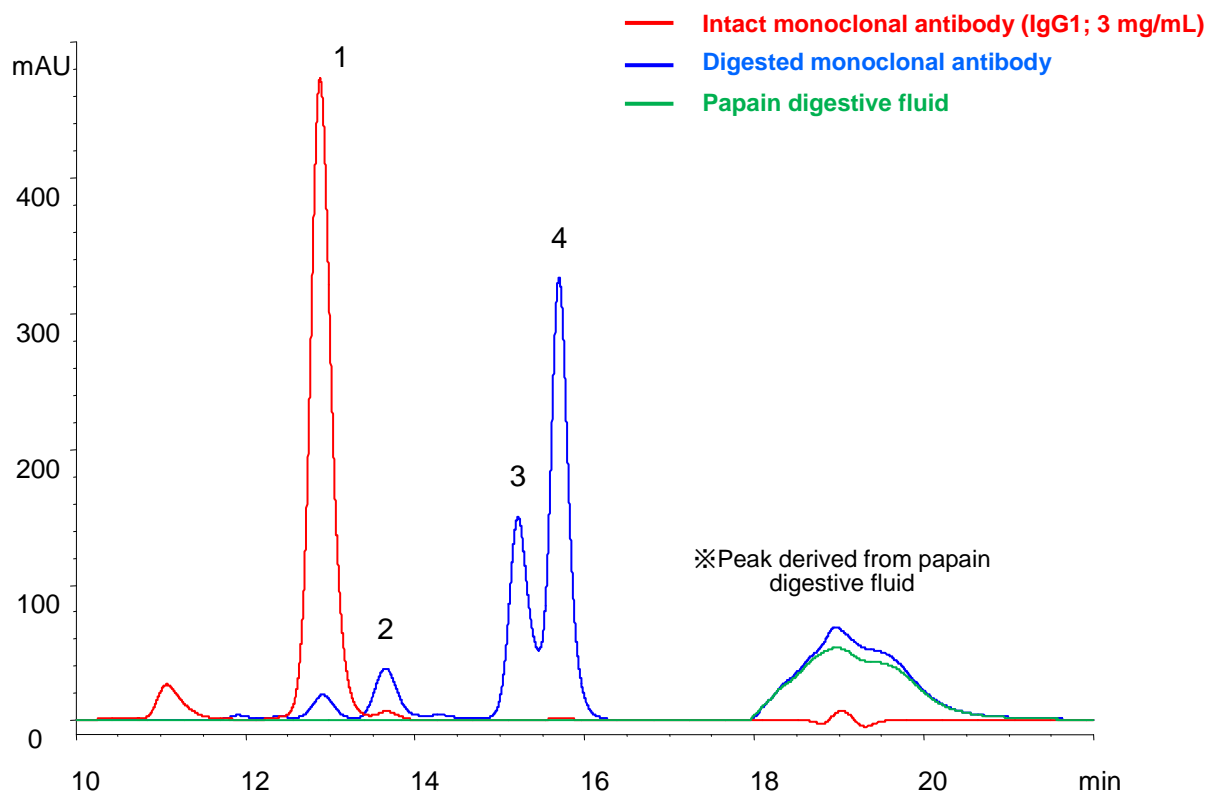


モノクローナル抗体のパパイン消化断片
Monoclonal antibody fragments

TS170809



1. Intact antibody



2. F_{ab} dimer



3. F_c



4. F_{ab}

Column	: YMC-Pack Diol-200 (2 μm) 300 X 4.6 mm I.D.
Eluent	: 0.1 M KH ₂ PO ₄ -K ₂ HPO ₄ (pH 7.0) containing 0.2 M NaCl
Flow rate	: 0.2 mL/min
Temperature	: ambient
Detection	: UV at 280 nm