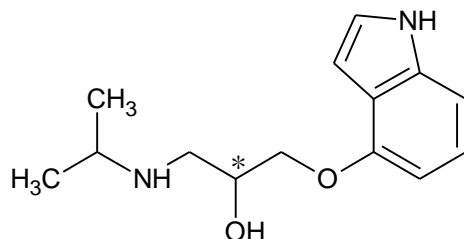
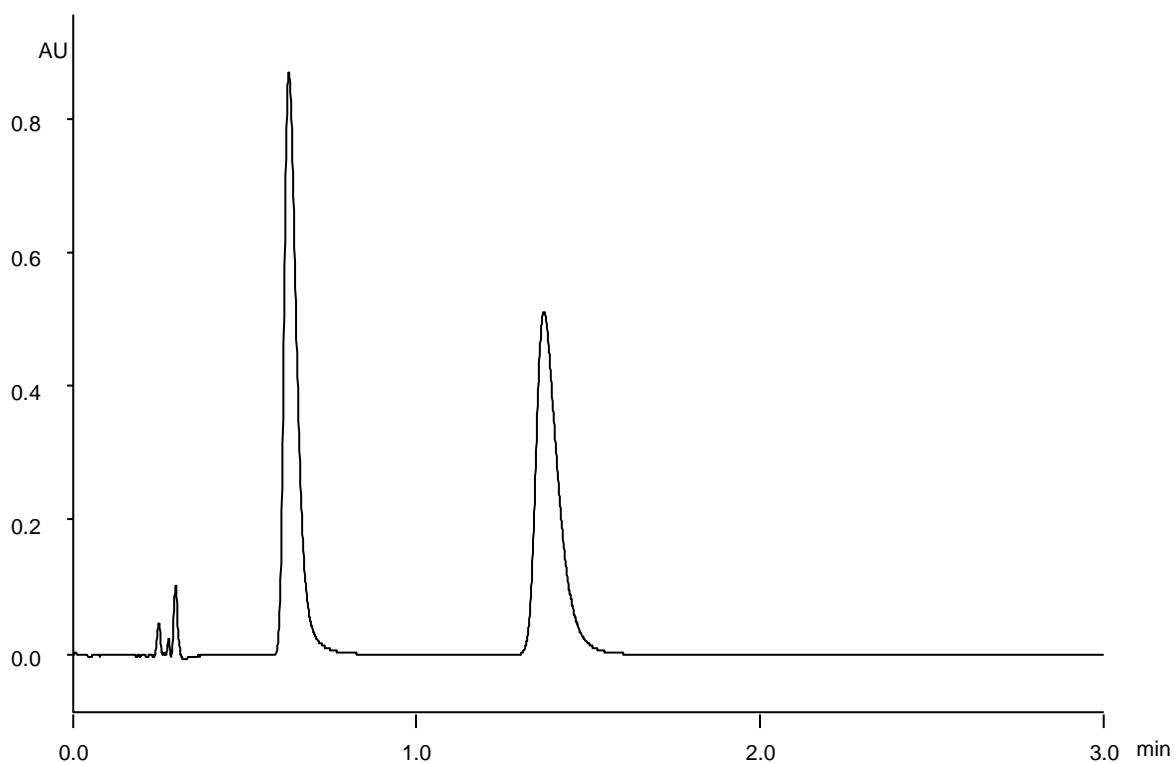


ピンドロール
Pindolol

T180405B



α	3.0
Rs	8.2



Column : Alcyon SFC CSP Cellulose-SB (3 μ m)
50 X 3.0 mmI.D.

Eluent : CO₂/methanol containing 0.1 % diethylamine (70/30)

Flow rate : 1.275 mL/min

Temperature : 35°C

Detection : UV at 215 nm

Backpressure : 13.8 MPa (2000 psi)

Injection : 0.7 μ L (1 mg/mL)