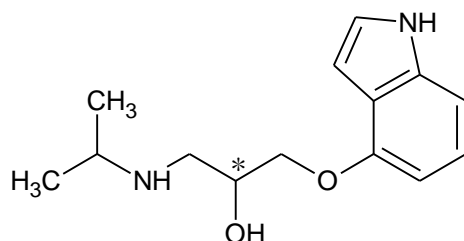
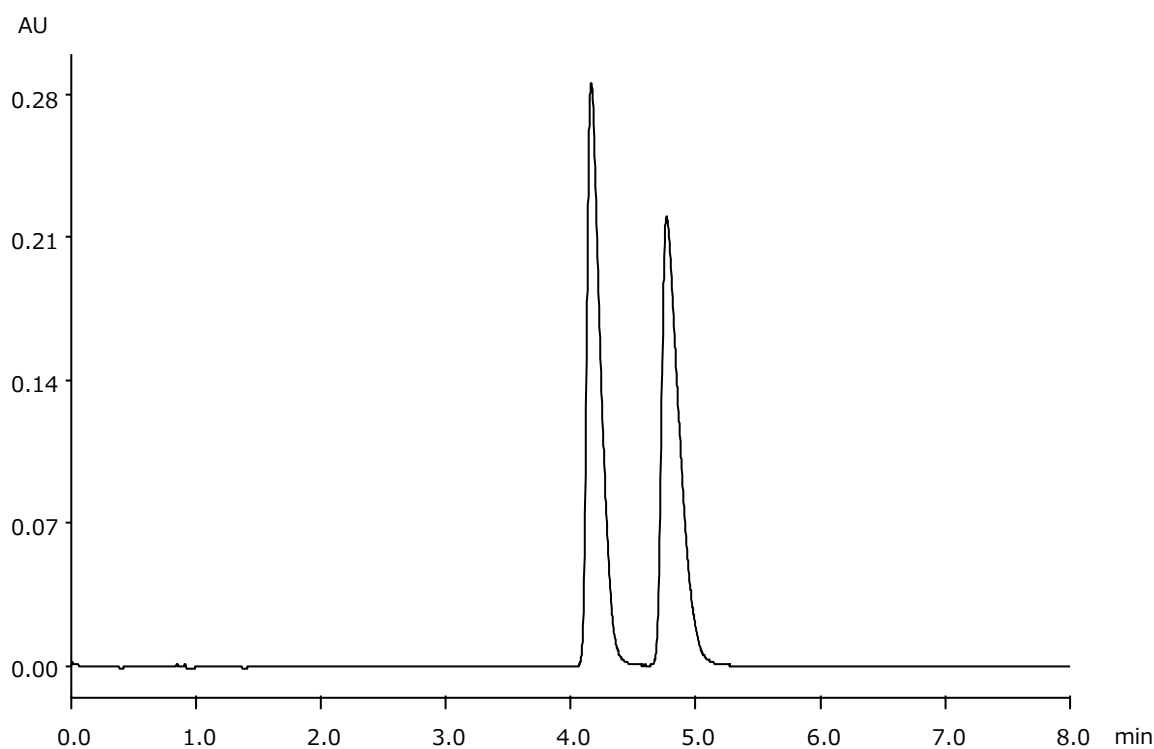


ピンドロール
Pindolol

T180330A



| | |
|----------|-----|
| α | 1.2 |
| Rs | 2.7 |



Column : Alcyon SFC CSP Cellulose-SJ (5 μ m)
 250 X 4.6 mm I.D.
 Eluent : CO₂/methanol containing 0.1 % 2-aminoethanol (75/25)
 Flow rate : 3.0 mL/min
 Temperature : 35°C
 Detection : UV at 220 nm
 Backpressure : 13.8 MPa (2000 psi)
 Injection : 2 μ L (1 mg/mL)