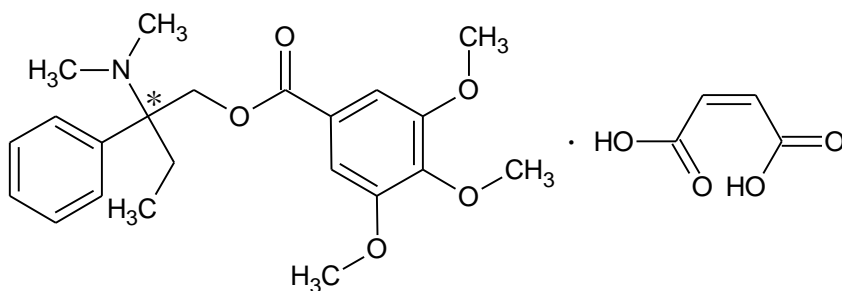
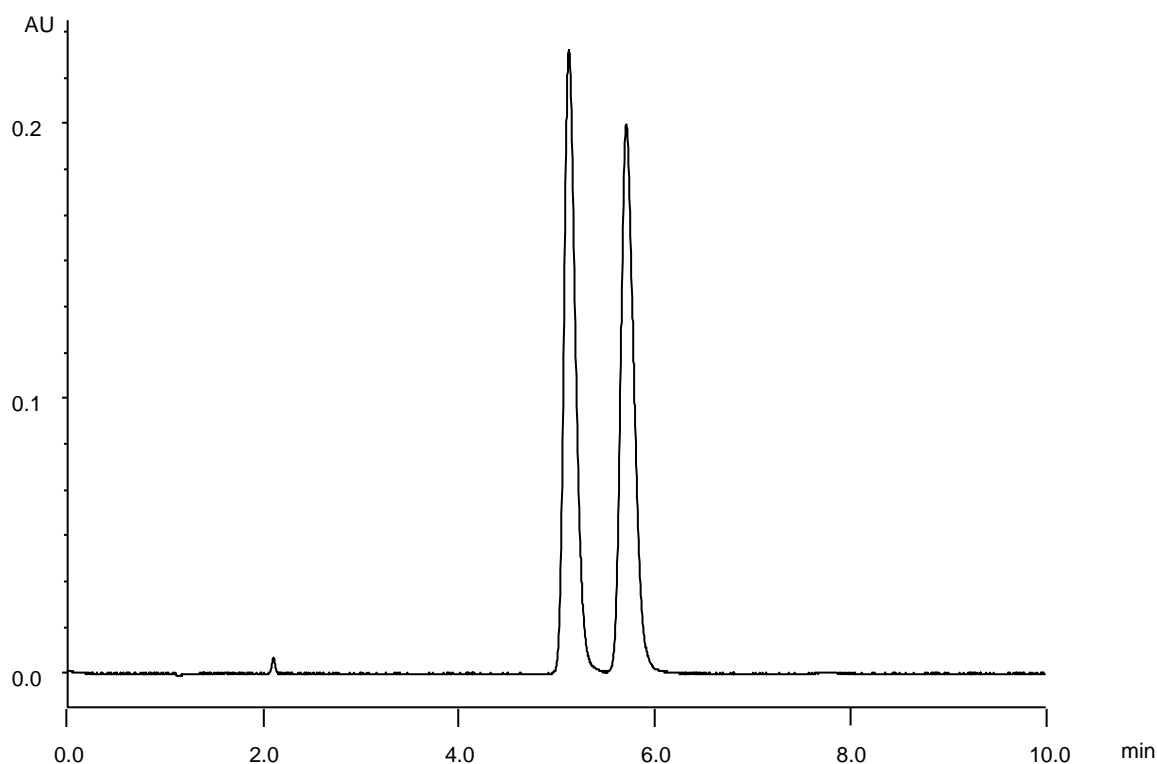


トリメブチンマレイン酸塩  
Trimebutine Maleate

T180320M



$\alpha$	1.1
$R_s$	2.8



Column : Alcyon SFC CSP Cellulose-SJ (5  $\mu$ m)  
250 X 4.6 mm I.D.

Eluent : CO<sub>2</sub>/ethanol containing 0.1 % diethylamine (98/2)

Flow rate : 3.0 mL/min

Temperature : 35°C

Detection : UV at 260 nm

Backpressure : 13.8 MPa (2000 psi)

Injection : 2  $\mu$ L (5 mg/mL)