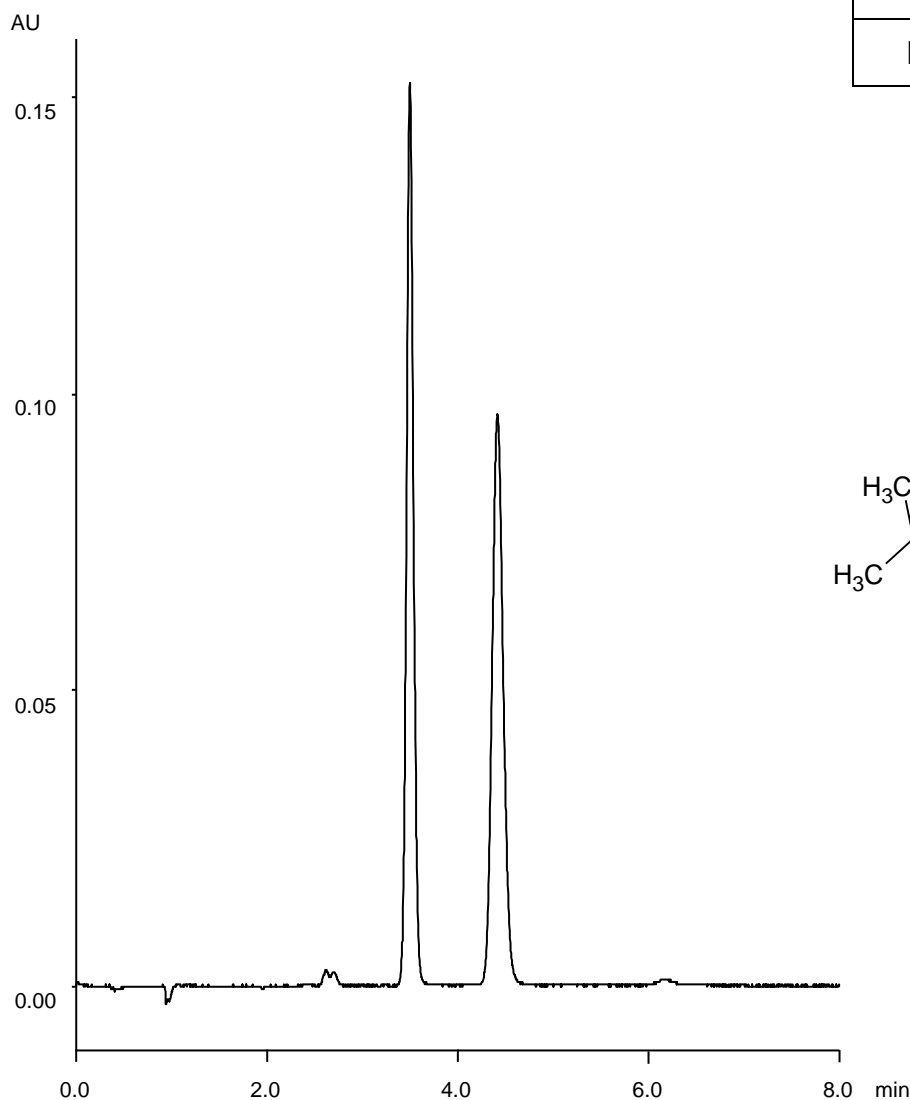
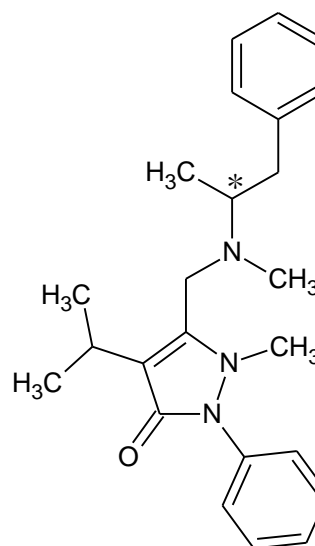


ファンプロファゾン
Famprofazone

T180320K



α	1.4
R_s	5.3



Column : Alcyon SFC CSP Cellulose-SJ (5 μ m)
 250 X 4.6 mmI.D.
 Eluent : CO₂/2-propanol containing 0.1 % diethylamine (85/15)
 Flow rate : 3.0 mL/min
 Temperature : 35°C
 Detection : UV at 280 nm
 Backpressure : 13.8 MPa (2000 psi)
 Injection : 2 μ L (1 mg/mL)