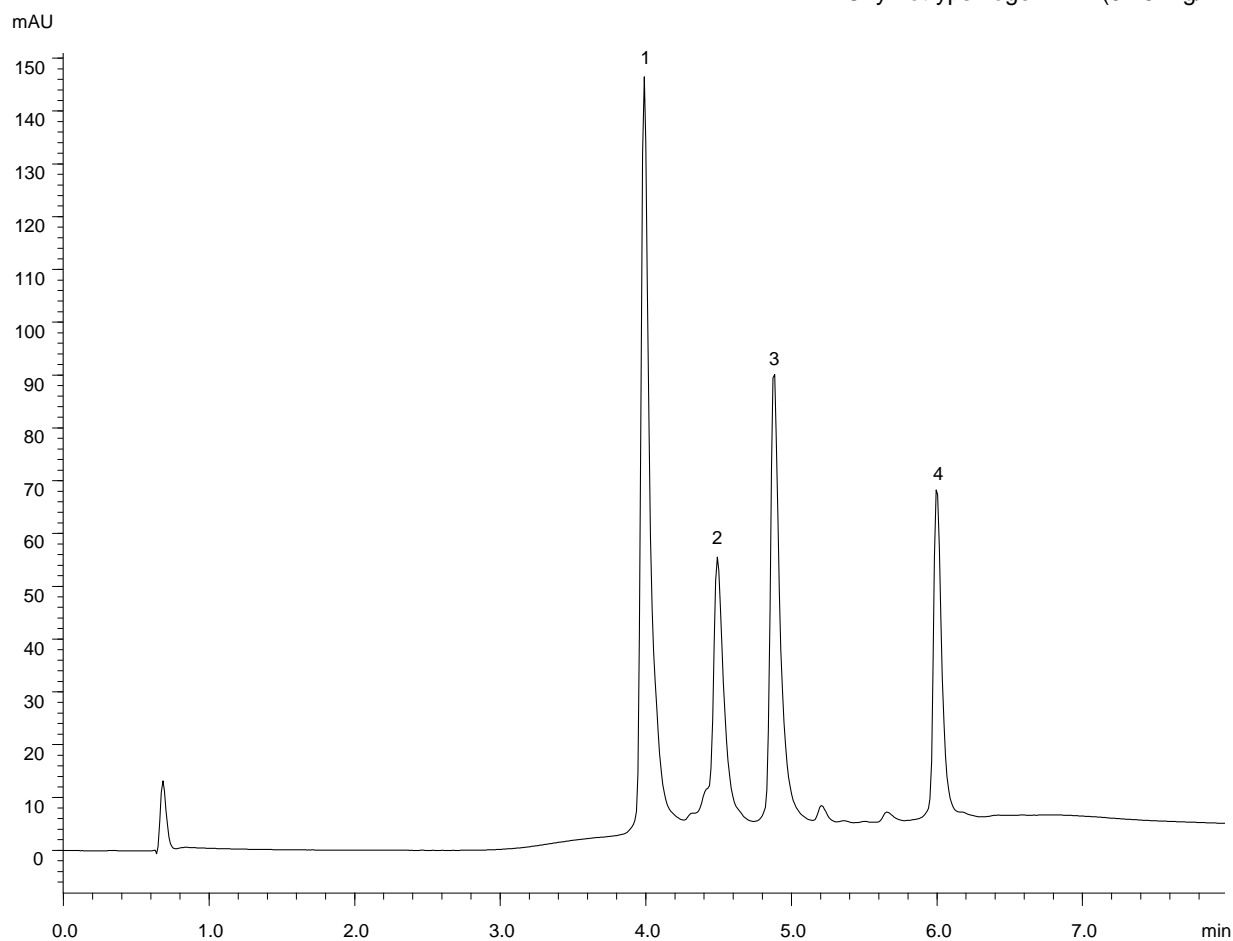


タンパク質
Proteins

L171208F02

- | | | |
|----|------------------------------|--------------|
| 1. | Myoglobin | (0.73 mg/mL) |
| 2. | Ribonuclease A | (0.75 mg/mL) |
| 3. | Lysozyme | (0.25 mg/mL) |
| 4. | α -Chymotrypsinogen A | (0.25 mg/mL) |



Column : BioPro HIC BF (4 μ m)
100 X 4.6 mm I.D.

Eluent : A) 100 mM NaH₂PO₄-Na₂HPO₄ (pH 7.0)
containing 2.0 M (NH₄)₂SO₄
B) 100 mM NaH₂PO₄-Na₂HPO₄ (pH 7.0)
0-100%B (0-4.58 min), 100%B (4.58-6.58 min)

Flow rate : 1.2 mL/min

Temperature : 25°C

Detection : UV at 280 nm

Injection : 15 μ L