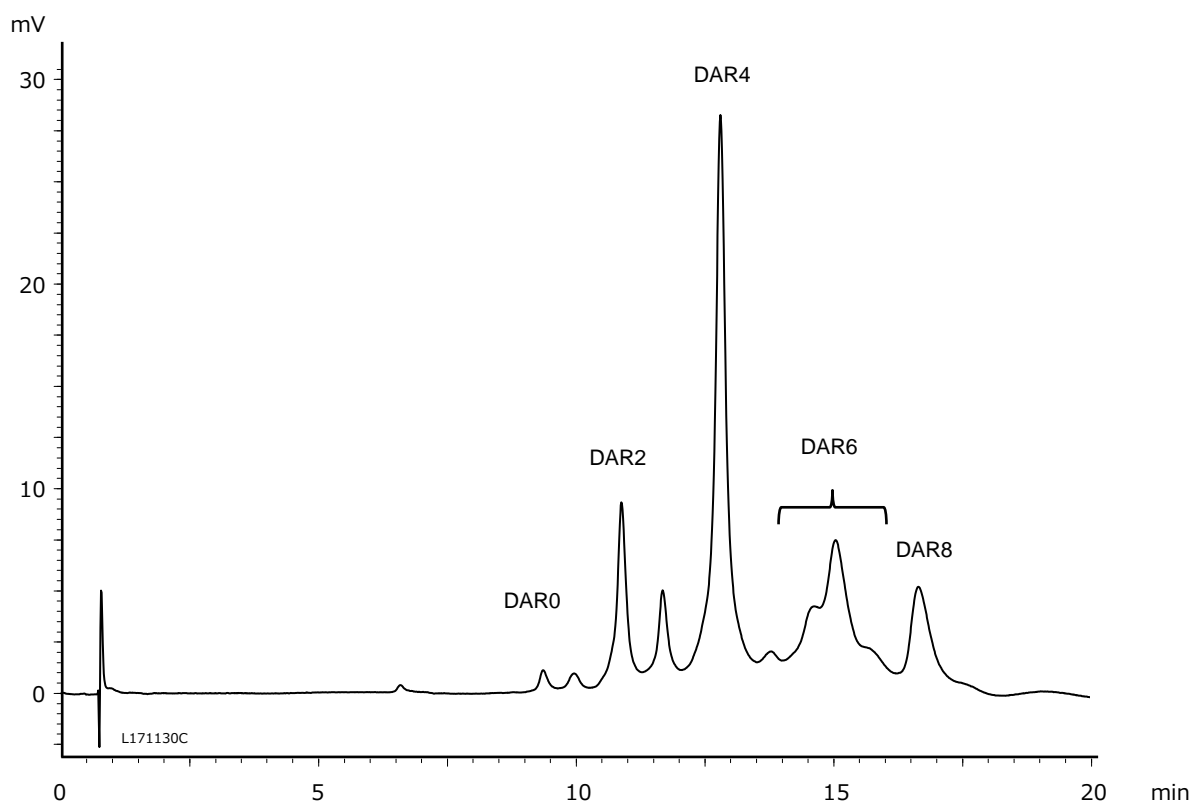


抗体薬物複合体 (ADC) の薬物抗体比 (DAR) 分析
Drug-to-Antibody Ratio (DAR) analysis of ADCs*

L171130C

*ADCs : Antibody-Drug Conjugates



Column	: BioPro HIC BF (4 μ m), 100 X 4.6 mm I.D.
Eluent	: A) 50 mM NaH ₂ PO ₄ -Na ₂ HPO ₄ (pH 7.0) containing 1.5 M (NH ₄) ₂ SO ₄ /2-propanol (95/5) B) 50 mM NaH ₂ PO ₄ -Na ₂ HPO ₄ (pH 7.0)/2-propanol (80/20) 0%B (0-1 min), 0-100%B (1-15 min), 100%B (15-20 min)
Flow rate	: 1.0 mL/min
Temperature	: 25°C
Detection	: UV at 280 nm
Injection volume	: 5 μ L
Sample	: Cysteine-conjugated ADC mimic (5 mg/mL)