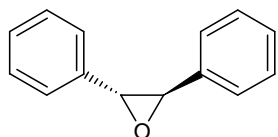


トランススチルベンオキサイド
trans-Stilbene oxide

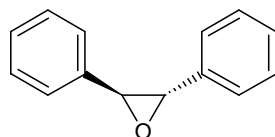
D180129B

1



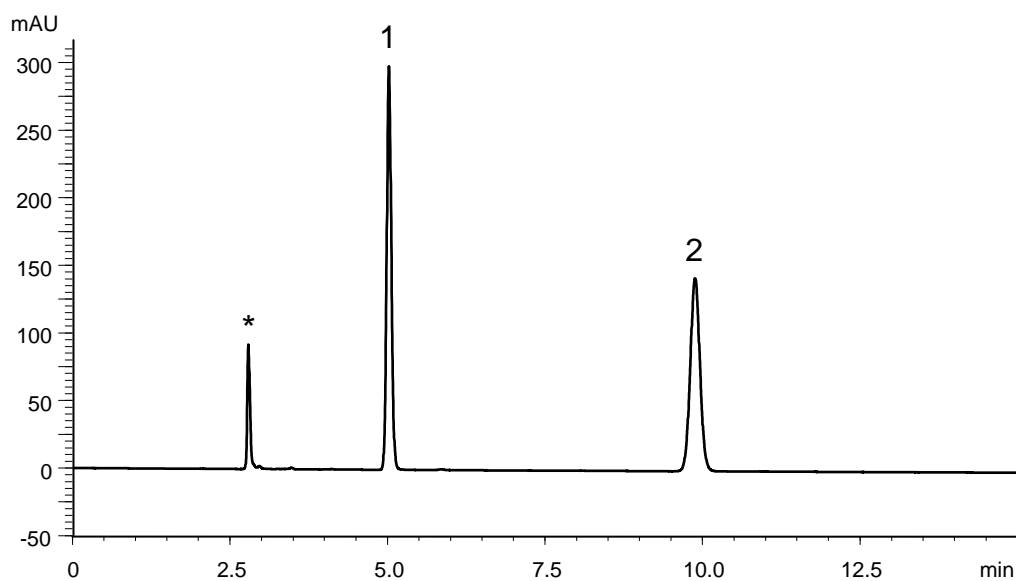
(+)-*R,R*-*trans*-Stilbene oxide

2



(-)-*S,S*-*trans*-Stilbene oxide

α	3.2
R_s	23.4



* 1,3,5-Tri-*tert*-butylbenzene (0.5 mg/mL, t_0 marker)

Column : CHIRAL ART Amylose-C Neo (5 μ m)
250 X 4.6 mmI.D.
Eluent : *n*-hexane/2-propanol (90/10)
Flow rate : 1.0 mL/min
Temperature : 25°C
Detection : UV at 230 nm
Injection : 5 μ L (0.1 mg/mL)