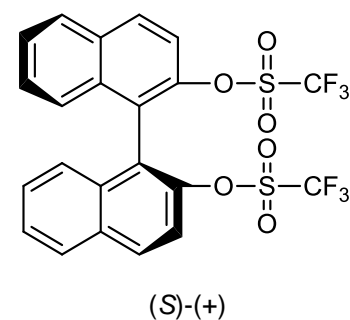
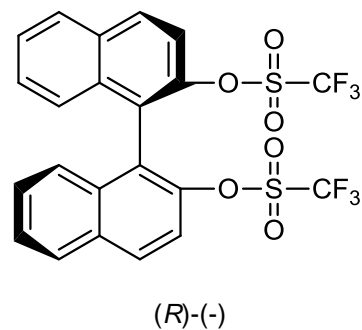
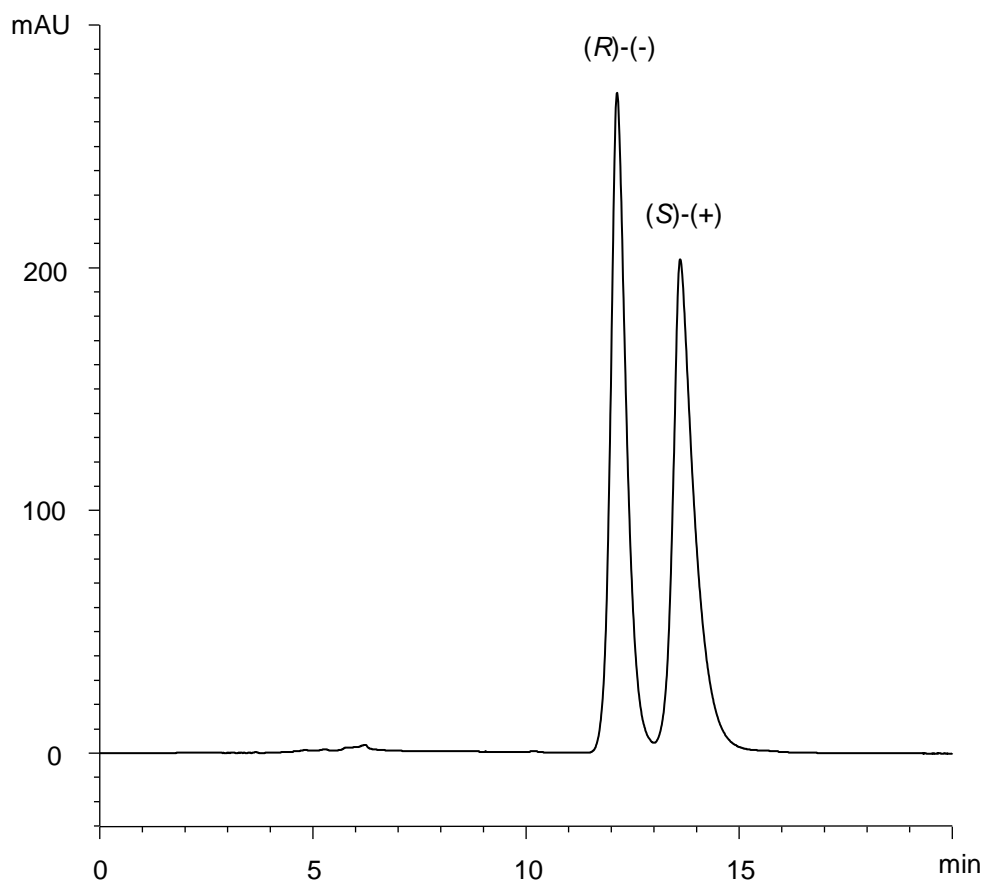


1,1'-ビナフチル-2,2'-ジイルビス(トリフルオロメタンスルホナート)

1,1'-Binaphthyl-2,2'-diyl Bis(trifluoromethanesulfonate)

E170901B



α	1.1
R_s	1.8

Column : CHIRAL ART Cellulose-SB (5 μ m)
250 X 4.6 mm I.D.

Eluent : *n*-hexane/methyl *tert*-butyl ether (100/2)

Flow rate : 1.0 mL/min

Temperature : 25°C

Detection : UV at 285 nm

Injection : 10 μ L (0.5 mg/mL)

Sample : Supplied by Tokyo Chemical Industry Co., Ltd.