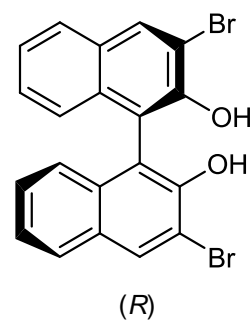
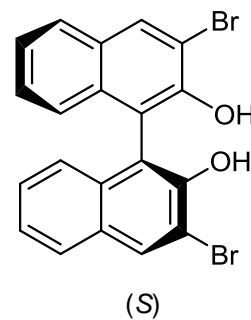
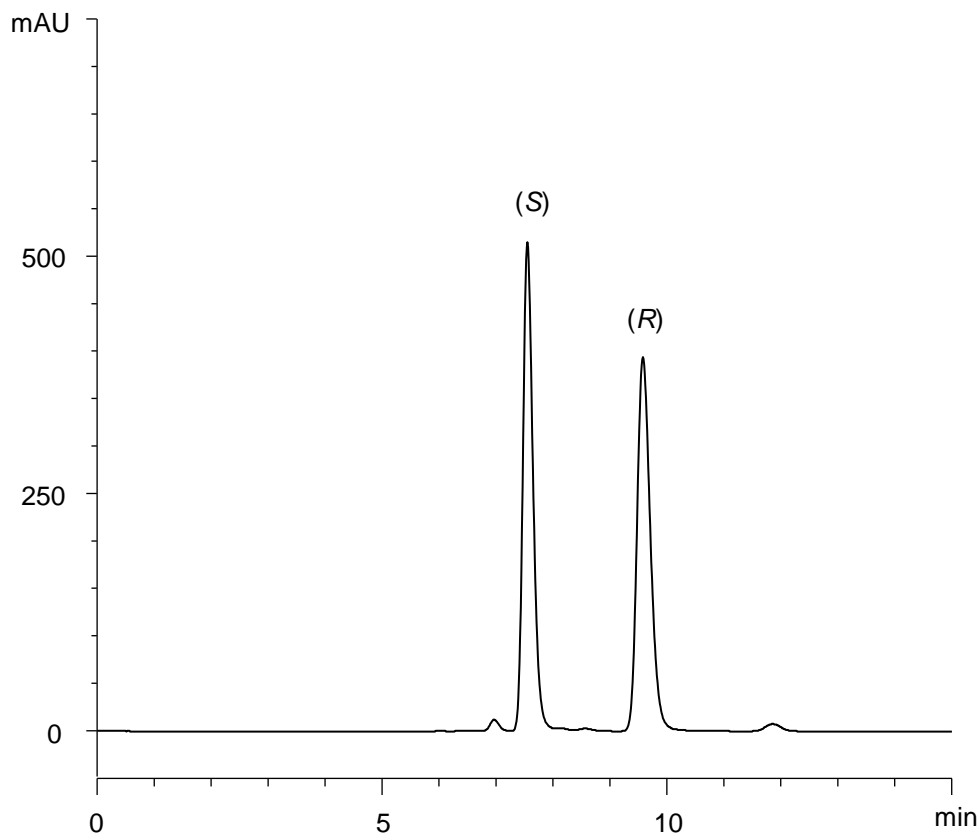


3,3'-ジブロモ-1,1'-ビ-2-ナフトール

3,3'-Dibromo-1,1'-bi-2-naphthol

E170810Q



α	1.4
R_s	5.4

Column : CHIRAL ART Amylose-SA (5 μ m)
250 X 4.6 mm I.D.

Eluent : *n*-hexane/ethanol (75/25)

Flow rate : 1.0 mL/min

Temperature : 25°C

Detection : UV at 285 nm

Injection : 10 μ L (0.5 mg/mL)