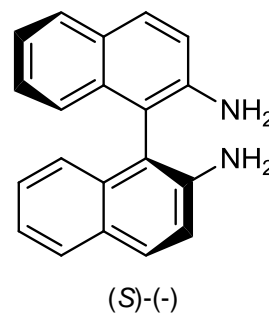
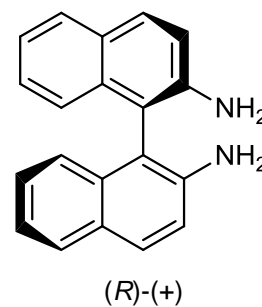
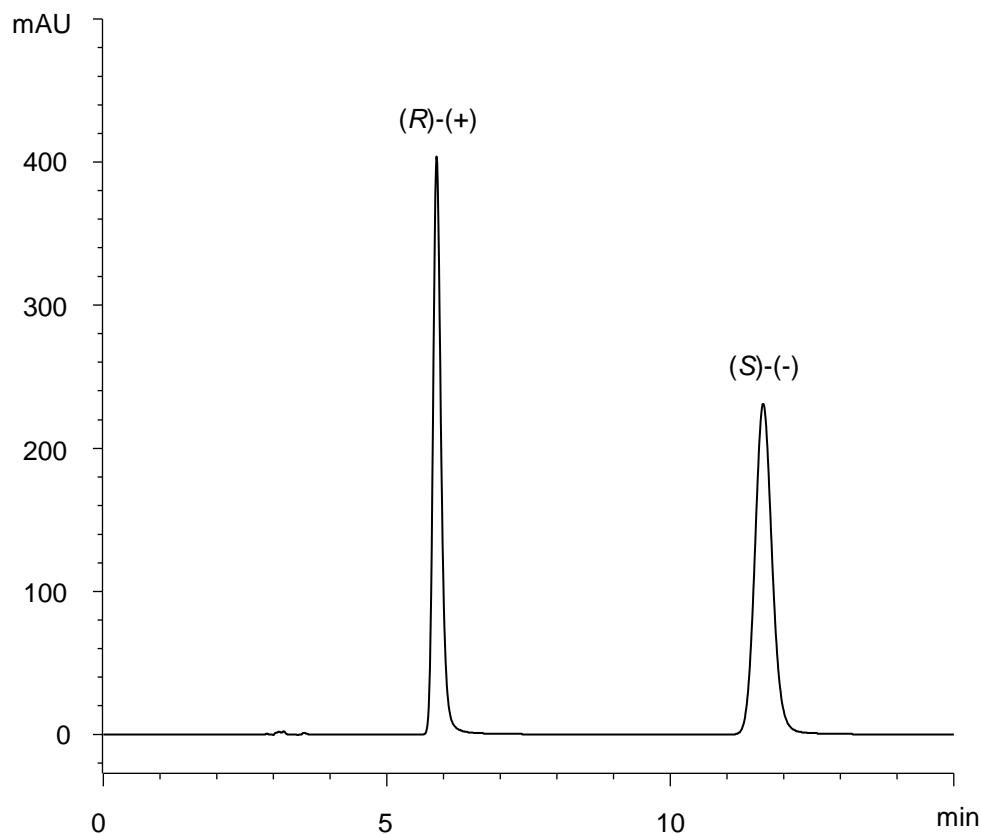


1,1'-ビナフチル-2,2'-ジアミン
1,1'-Binaphthyl-2,2'-diamine

E170801V



α	2.9
R_s	14.3

Column : CHIRAL ART Amylose-SA (5 μ m)
250 X 4.6 mm I.D.

Eluent : *n*-hexane/2-propanol (50/50)

Flow rate : 1.0 mL/min

Temperature : 25°C

Detection : UV at 240 nm

Injection : 10 μ L (0.025 mg/mL)

Sample : Supplied by Tokyo Chemical Industry Co., Ltd.