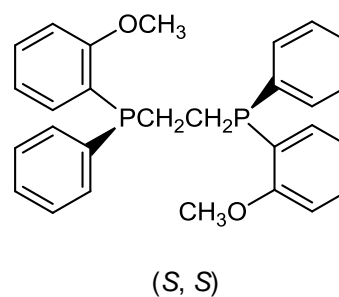
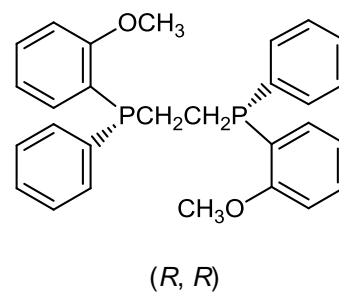
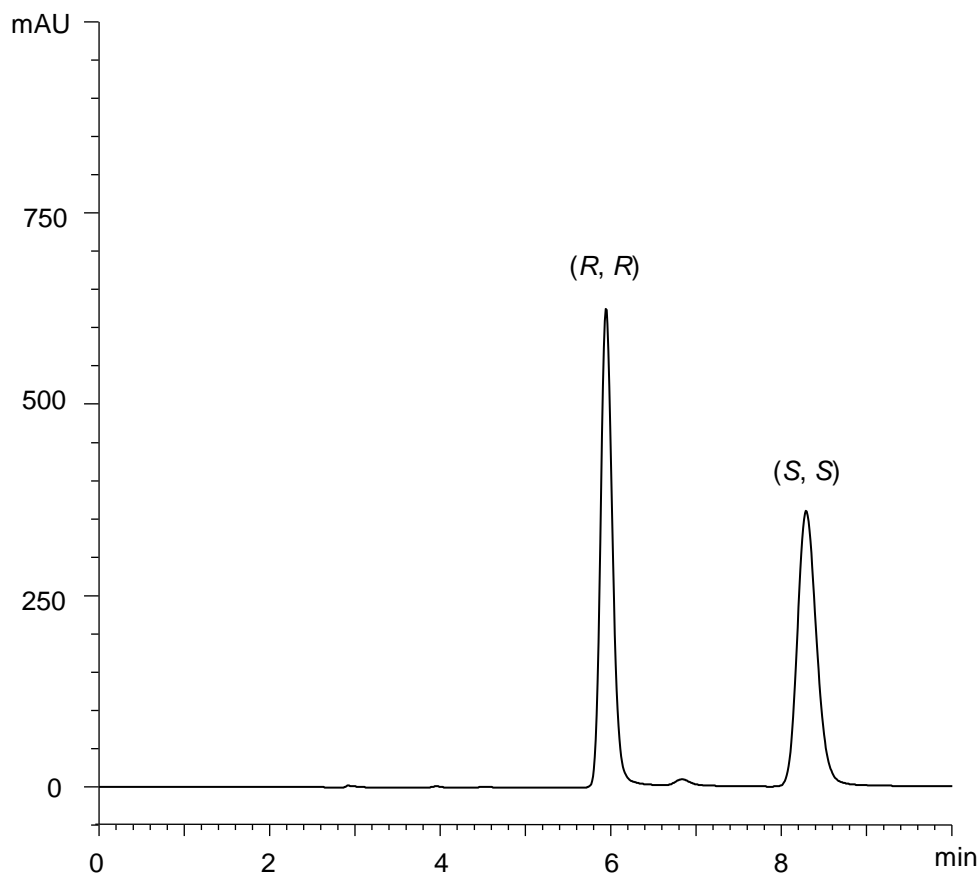


1,2-ビス[(2-メトキシフェニル)フェニルホスフィノ]エタン
1,2-Bis[(2-methoxyphenyl)phenylphosphino]ethane

E170727P



α	1.7
R_s	7.1

Column : CHIRAL ART Amylose-C (5 μ m)
250 X 4.6 mm I.D.
Eluent : *n*-hexane/2-propanol (90/10)
Flow rate : 1.0 mL/min
Temperature : 25°C
Detection : UV at 285 nm
Injection : 10 μ L (0.5 mg/mL)