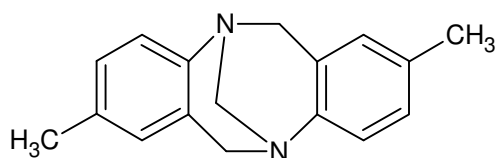
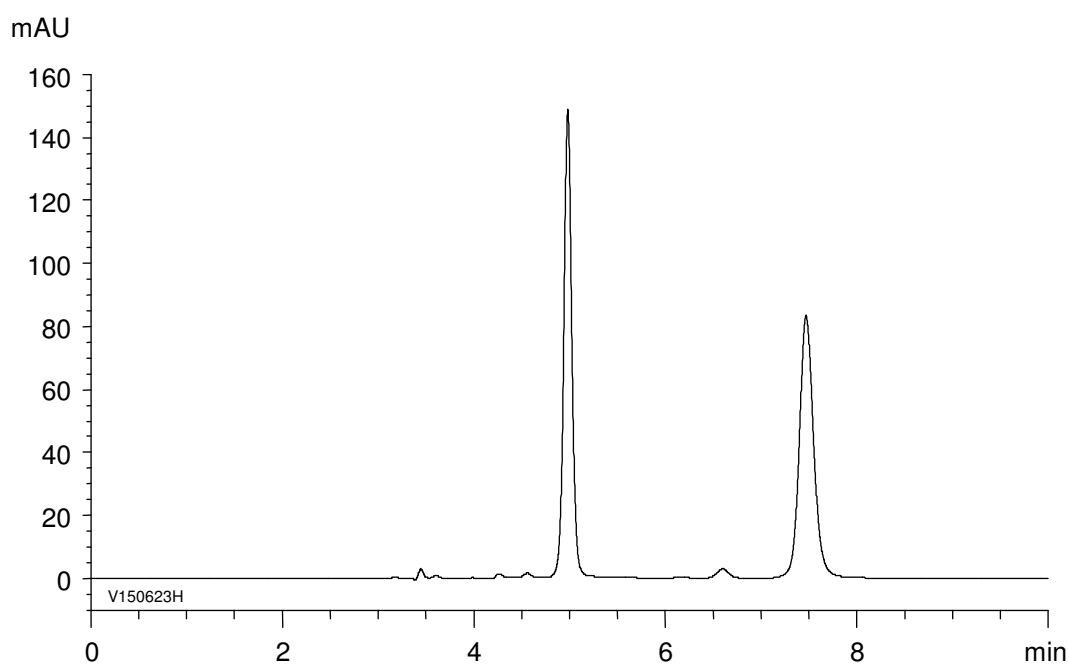


トレガー塩基
Troger's base

V150623H



α	2.3
Rs	12.2



Column : CHIRAL ART Amylose-SA (5 μ m)
250 X 4.6 mm I.D.
Eluent : *n*-hexane/ethanol (90/10)
Flow rate : 1.0 mL/min
Temperature : 25°C
Detection : UV at 254 nm
Injection : 10 μ L (0.1 mg/mL)