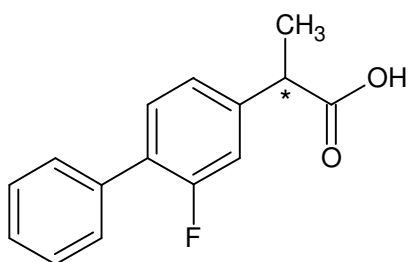


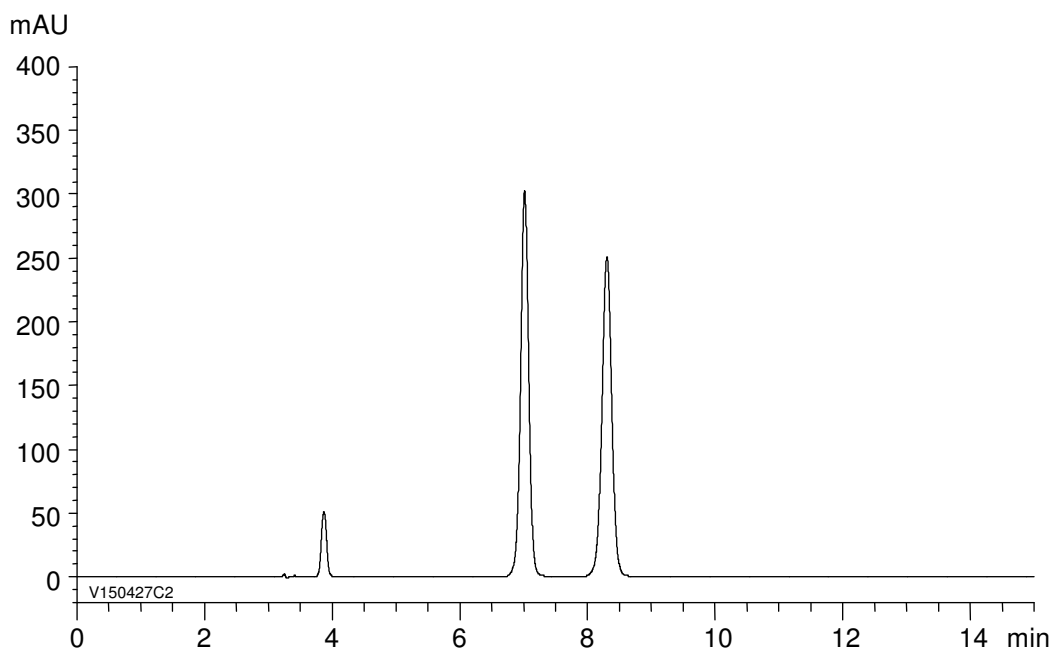
フルルビプロフェン

Flurbiprofen

V150427C



$\alpha$	1.3
Rs	5.1



Column : CHIRAL ART Amylose-SA (5  $\mu$ m)  
250 X 4.6 mm I.D.

Eluent : *n*-hexane/2-propanol/TFA (95/5/0.1)

Flow rate : 1.0 mL/min

Temperature : 25°C

Detection : UV at 254 nm

Injection : 10  $\mu$ L (0.1 mg/mL)