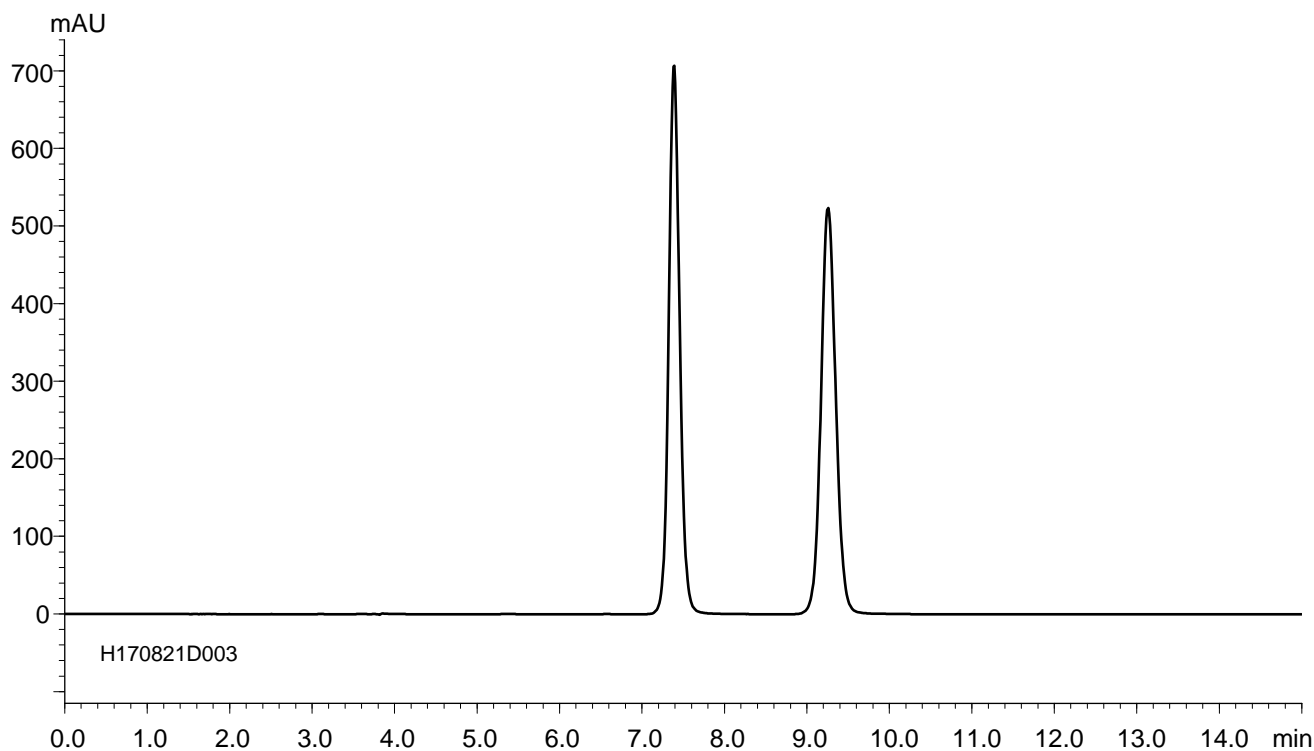
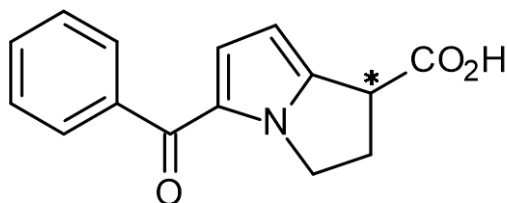


ケトロラック
Ketrolac

H170821D



| | |
|-------------|---|
| Column | : CHIRAL ART Cellulose-SJ (5 μm) 250 X 4.6 mm I.D. |
| Eluent | : <i>n</i> -hexane/tetrahydrofuran/TFA (70/30/0.1) |
| Flow rate | : 1.0 mL/min |
| Temperature | : 25°C |