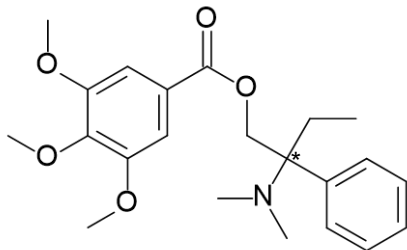
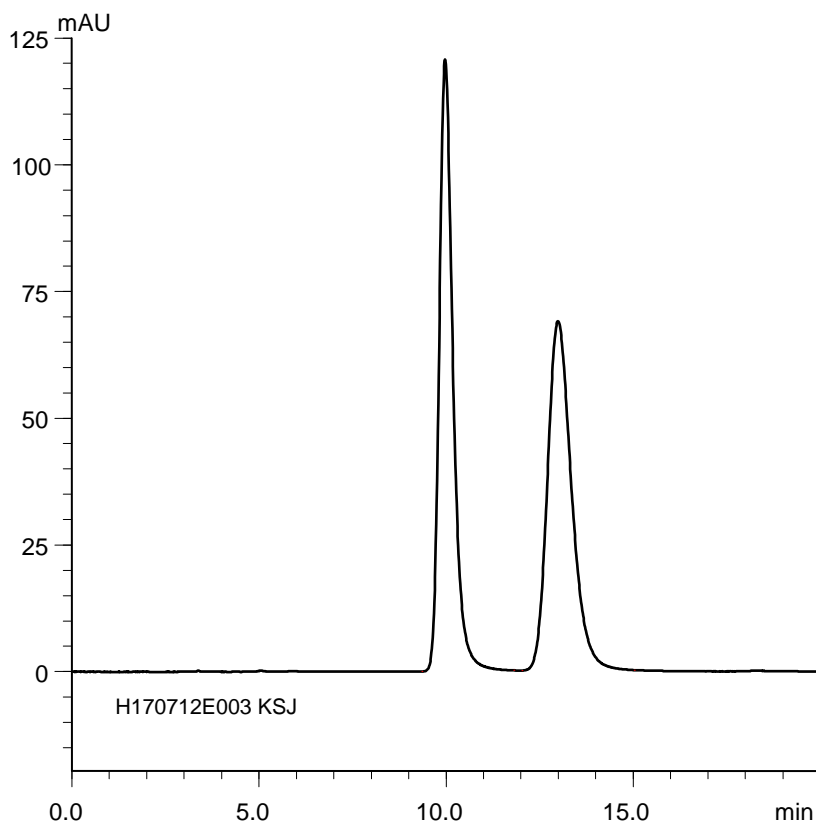


トリメブチン  
Trimebutine

H170712E



$\alpha$	1.43
Rs	3.36



Column : CHIRAL ART Cellulose-SJ (5  $\mu$ m)  
250 X 4.6 mm I.D.

Eluent : *n*-hexane/ethanol/diethylamine (95/5/0.1)

Flow rate : 1.0 mL/min

Temperature : 25°C

Detection : UV at 265 nm

Injection : 5  $\mu$ L (1 mg/mL)