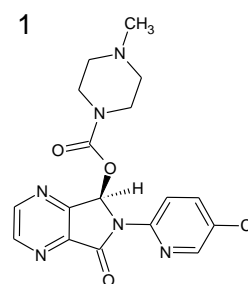
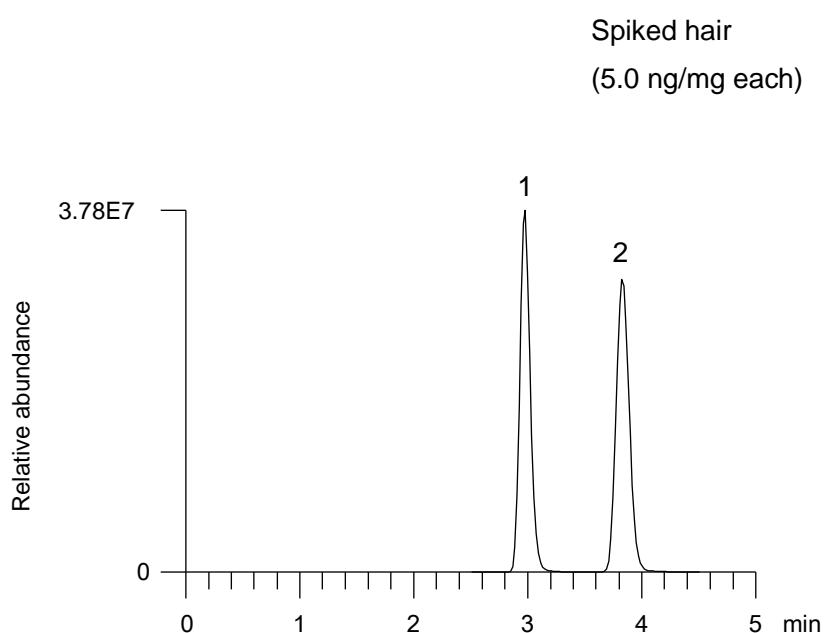


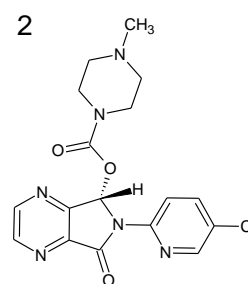
ヒト毛髪中ゾピクロンのキラル LC/HRMS 分析  
Analysis of zopiclone in human hair by chiral LC/HRMS

F170925D

Extracted ion chromatograms (m/z 389.11 > 245.022)



(*R*)-Zopiclone



(*S*)-Zopiclone  
(Eszopiclone)

Courtesy of H. Miyaguchi, National Research Institute of Police Science.

Column	: CHIRAL ART Cellulose-SC (3 μm) 150 X 2.0 mm I.D.
Eluent	: 10 mM ammonium bicarbonate (pH 8.0 with aqueous ammonia)/ acetonitrile (25/75)
Flow rate	: 0.2 mL/min
Temperature	: 25°C
Detection	: ESI, positive
Injection	: 10 μL (Hair sample extracted by micropulverized extraction)
Instrument	: LC) Ultimate™ 3000 liquid chromatograph (Thermo Fisher Scientific) HRMS) Q Exactive™ mass spectrometer (Thermo Fisher Scientific)

Reference

H. Miyaguchi, K. Kuwayama, Enantioselective determination of (*R*)-zopiclone and (*S*)-zopiclone (eszopiclone) in human hair by micropulverized extraction and chiral liquid chromatography/high resolution mass spectrometry, *J.Chromatogr. A* 1519 (2017) 55-63.