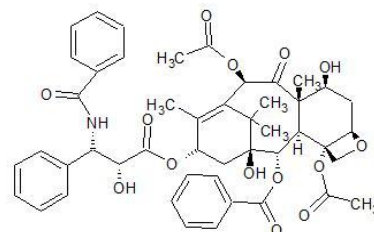
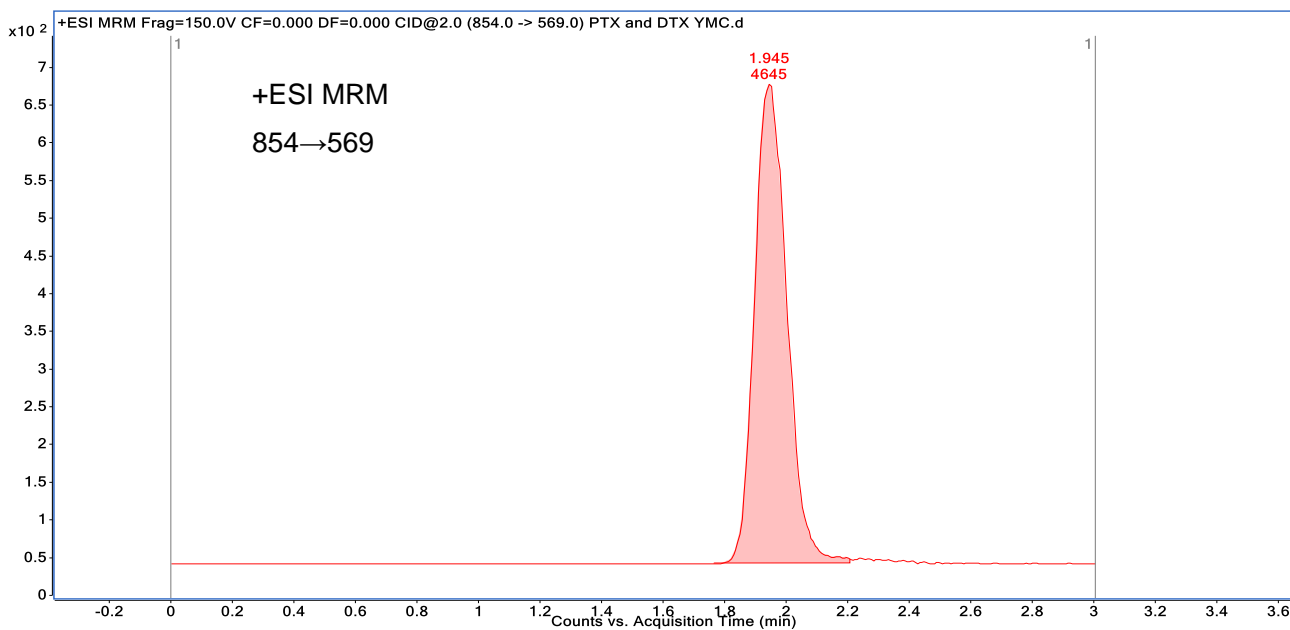


パクリタキセル (タキソール)  
Paclitaxel (Taxol)

R161118A



Paclitaxel



Courtesy of Gyeong Sang National University

Column	: YMC-Triart C18 (3 $\mu$ m, 12 nm) 50 X 2.0 mmI.D.
Eluent	: acetonitrile/0.1% formic acid (45/55)
Flow rate	: 0.3 mL/min
Temperature	: 30°C
Detection	: ESI positive-mode
Injection	: 2 $\mu$ L (1 $\mu$ g/mL)