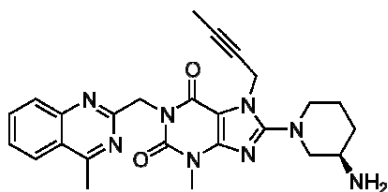


LINAGLIPTIN

AIM

Chiral HPLC method Development for the separation of enantiomers in **Linagliptin (LGP)**.

Product: General Information



Molecular Formula : $C_{25}H_{28}N_8O_2$

Molecular Weight : 472.54 g/mol

Chromatographic Conditions

Column	: CHIRALART Amylose - C (250 x 4.6 mm, 5 μ)
Mobile Phase	: Ethanol: Methanol: Diethyl amine (90:10:0.1) (v/v/v)
Flow Rate	: 0.5 mL/min
Detection wavelength (UV)	: 225 nm
Column Temperature	: 30°C
Injection volume	: 20 μ L
Sample Concentration	: 0.2 mg/mL
Diluent	: Methanol or Mobile Phase
Run time	: 30 min

Chromatogram

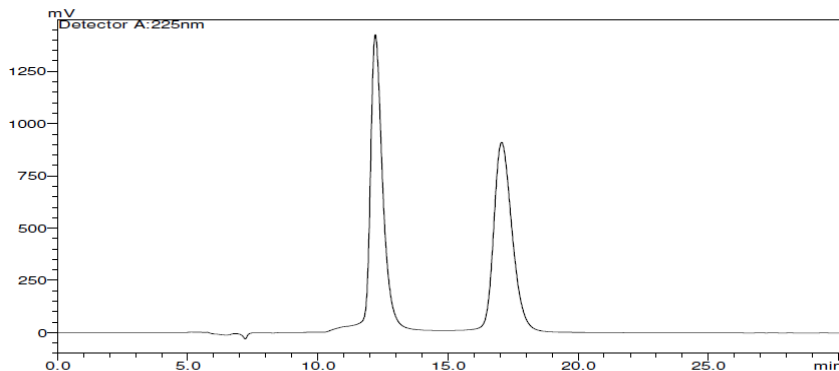


Figure: Typical chromatogram of **Linagliptin (LGP)** isomer mix solution

Peak Identification

Retention Time (RT)	Resolution (Rs)	Name
12.208	-	(S)-Isomer
17.058	4.69	LGP

For further details please Contact: **YMC India Private Limited**

Address: A-154-155, 1st Floor, Eros Boulevard, Eros Boulevard, Hotel Crown Plaza, District Centre, Mayur Vihar Phase -1, New Delhi – 110091

Contact No- 011-45041601; **Email:** sales@ymcindia.com

YMC CHIRALART

