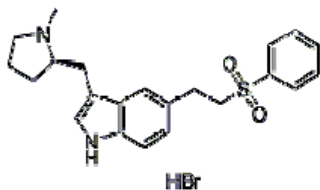


ELETRIPTAN

AIM

Chiral HPLC method Development for the separation of enantiomers in **Eletriptan Hydrobromide**.

Product: General Information



Molecular Formula : $C_{22}H_{26}N_2O_2S \cdot HBr$

Molecular Weight : 463.43

Chromatographic Conditions

Column : CHIRALART Cellulose - SB (250 x 4.6 mm, 5 μ)
 Mobile Phase : *n*-Hexane: Ethanol: Trifluoro acetic acid: Diethyl amine
 (85:15:0.5:0.5)
 Flow Rate : 0.8 mL/min
 Detection wavelength (UV) : 223 nm
 Column Temperature : 10°C
 Injection volume : 20 μ L
 Sample Concentration : 0.2 mg/mL
 Diluent : *n*-Hexane: Ethanol (60:40)
 Run time : 60 min

Chromatogram

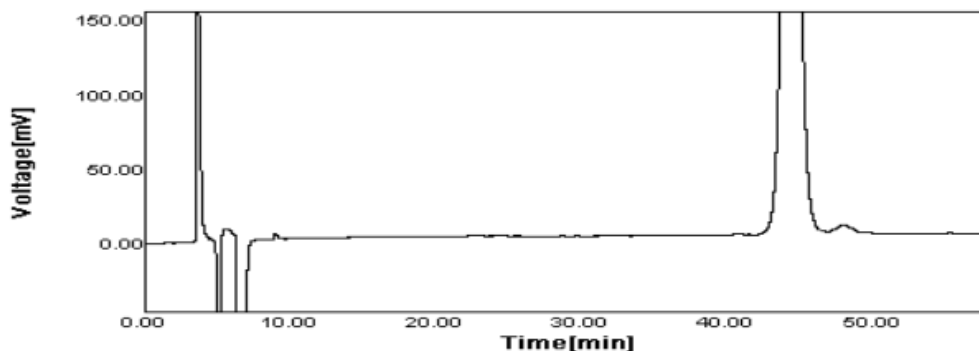


Figure: Typical chromatogram of **Eletriptan Hydrobromide** Isomer mixture.

Peak Identification

Retention Time (RT)	Resolution (Rs)	Name
44.353	-	Eletriptan
47.927	1.90	Enantiomer

For further details please Contact: **YMC India Private Limited**

Address: A-154-155, 1st Floor, Eros Boulevard, Eros Boulevard, Hotel Crown Plaza,
 District Centre, Mayur Vihar Phase -1, New Delhi – 110091

Contact No- 011-45041601; **Email:** sales@ymcindia.com

YMC CHIRALART

