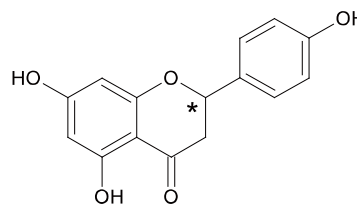
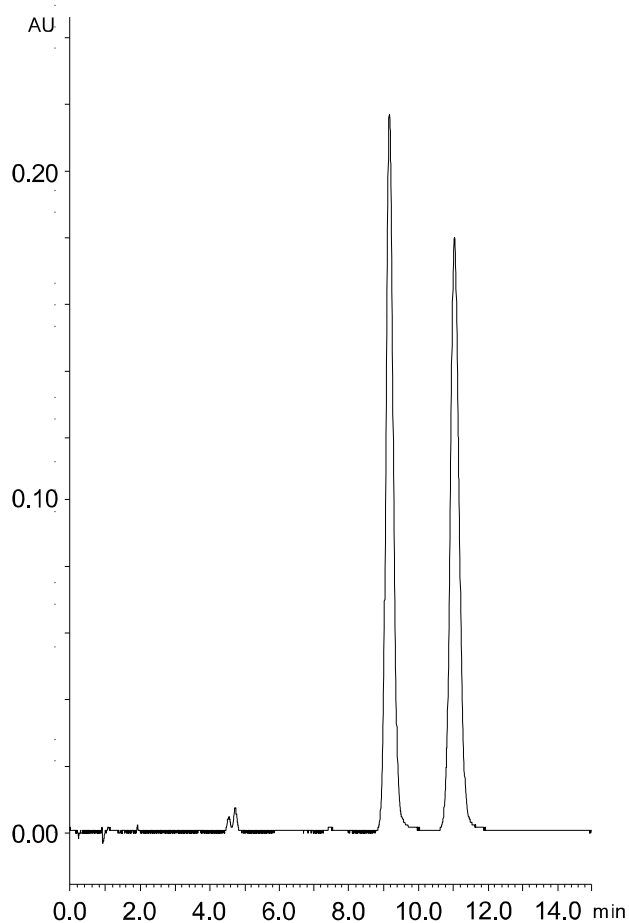


ナリンゲニン  
Naringenin

T150610AT



Column : Alcyon SFC CSP Cellulose-SB (5  $\mu$ m)  
250 X 4.6 mm I.D.  
Eluent : CO<sub>2</sub>/2-propanol (80/20)  
Flow rate : 3.0 mL/min  
Temperature : 35°C  
Detection : UV at 220 nm  
Back pressure : 13.8 MPa (2000 psi)  
Injection : 5  $\mu$ L (1.0 mg/mL)