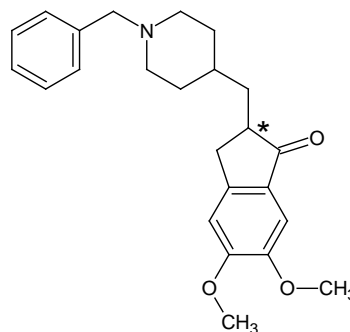
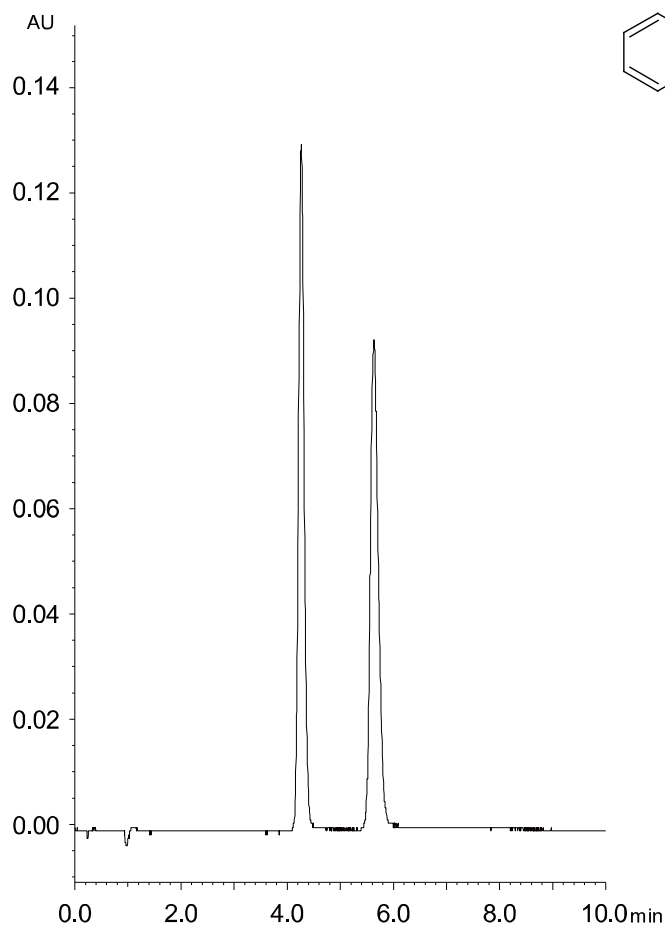


ドネペジル
Donepezil

T150609I



Column : Alcyon SFC CSP Cellulose-C (5 μ m)
250 X 4.6 mmI.D.
Eluent : CO₂/2-propanol containing 0.1%DEA (70/30)
Flow rate : 3.0 mL/min
Temperature : 35°C
Detection : UV at 268 nm
Back pressure : 13.8 MPa (2000 psi)
Injection : 5 μ L (1.0 mg/mL)