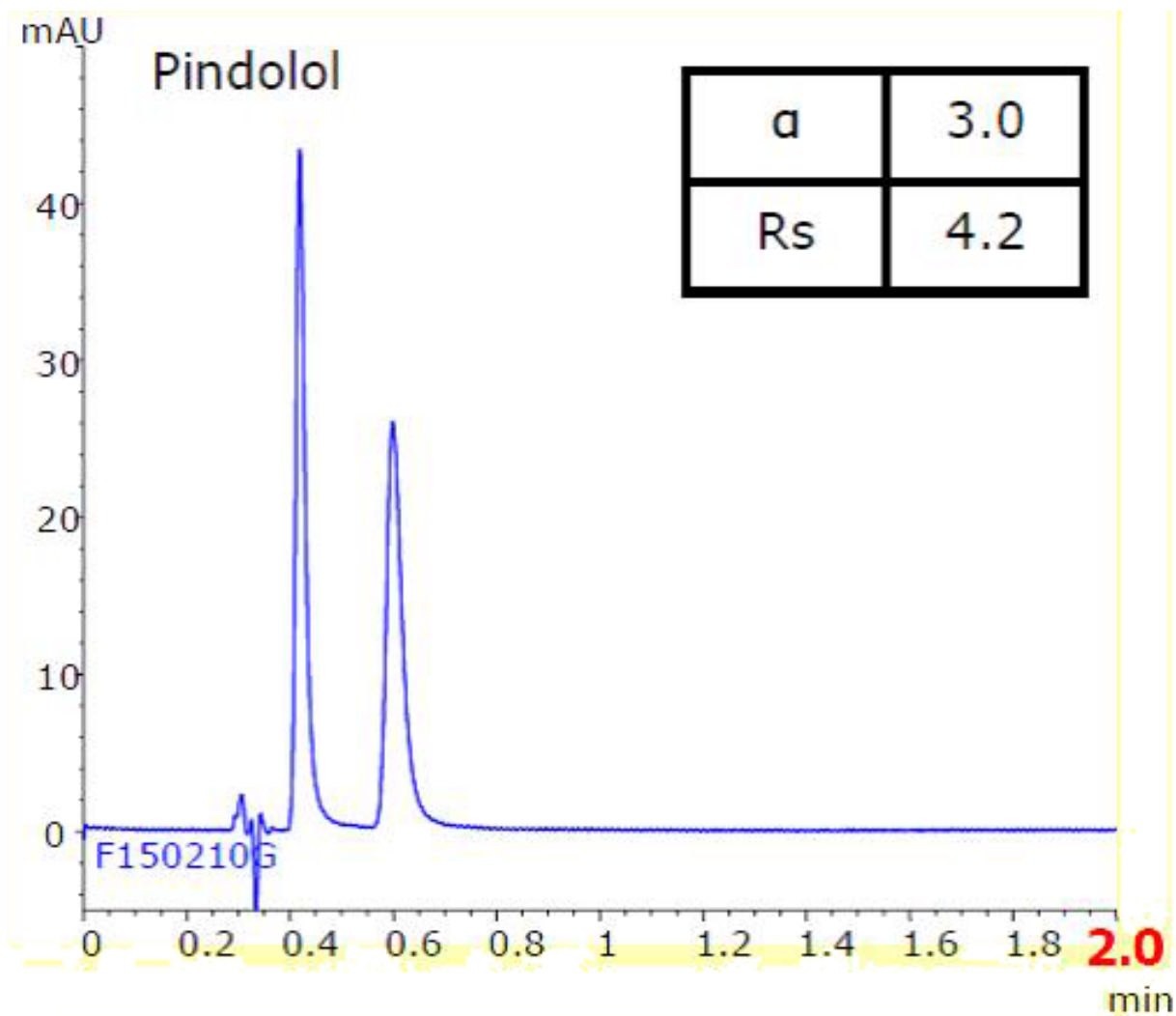


Pindolol

F150210G



Column : CHIRAL ART Cellulose-SB
3 μ m, 50 X 3.0 mmI.D.

Eluent : A) n-hexane/DEA (100/0.1), B) ethanol/DEA (100/0.1) 60%B

Flow rate : 0.85ml/min

Temperature : 25 $^{\circ}$ C

Detection : UV at 265nm

Injection : 2 μ l (100 μ g/mL)