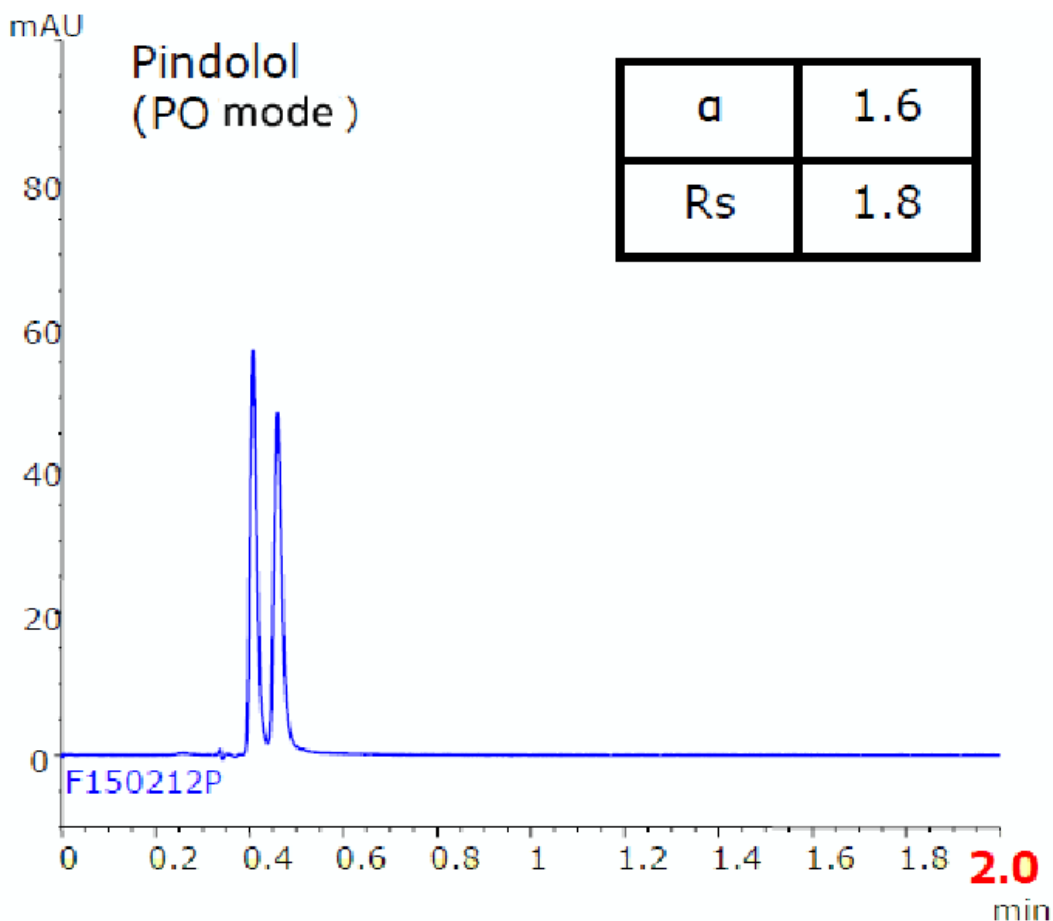


Pindolol

F150212P



Column : CHIRAL ART Cellulose-SB  
3 $\mu$ m, 50 X 3.0 mmI.D.

Eluent : Methanol/DEA (100/0.1)

Flow rate : 0.85ml/min

Temperature : 25 $^{\circ}$ C

Detection : UV at 265nm

Injection : 2 $\mu$ l (100 $\mu$ g/mL)