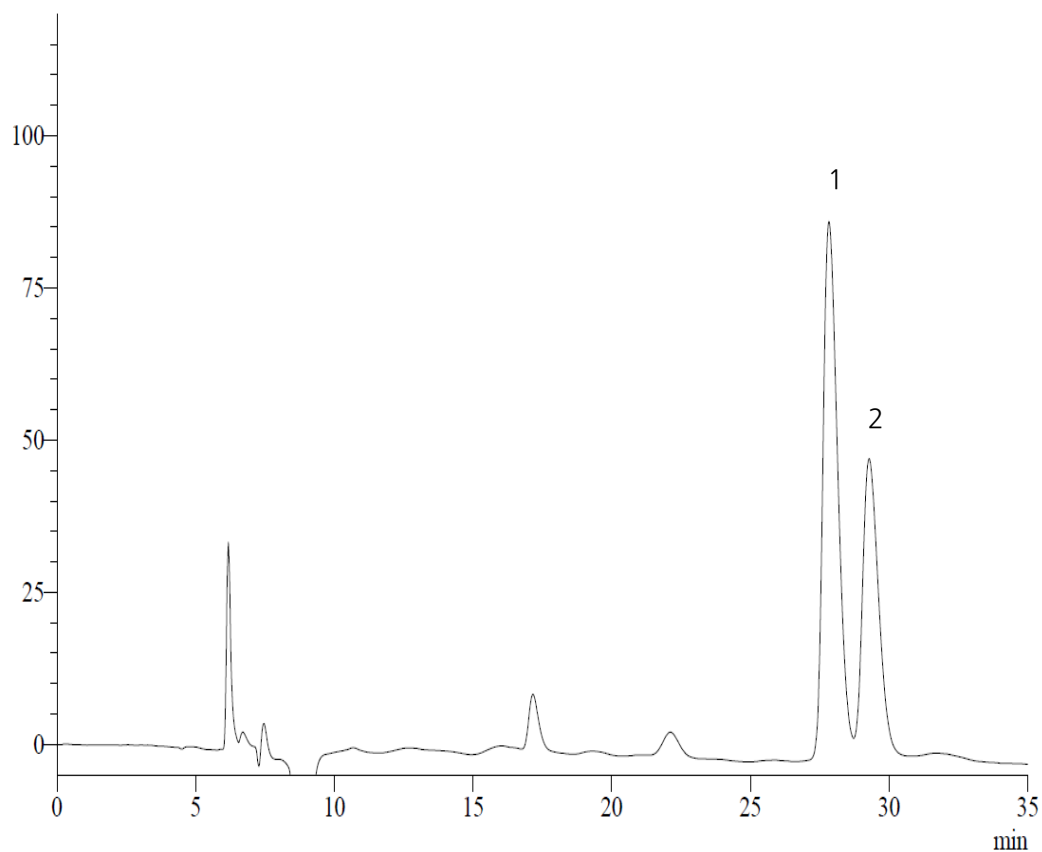


saccharide

Turanose

KR15120701



Column : YMC Polyamine II (5 $\mu$ m, 12nm)  
250 X 4.6 mmI.D. X 2ea  
Eluent : Ethanol/Ethyl Acetate/Acetonitrile/Water (32/42/6/20)  
Flow rate : 1ml/min  
Temperature : 30°C  
Detection : RI, 32 X 10<sup>-6</sup> RIU/FS  
Injection : 10 $\mu$ l