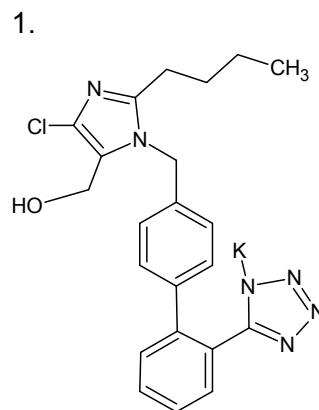
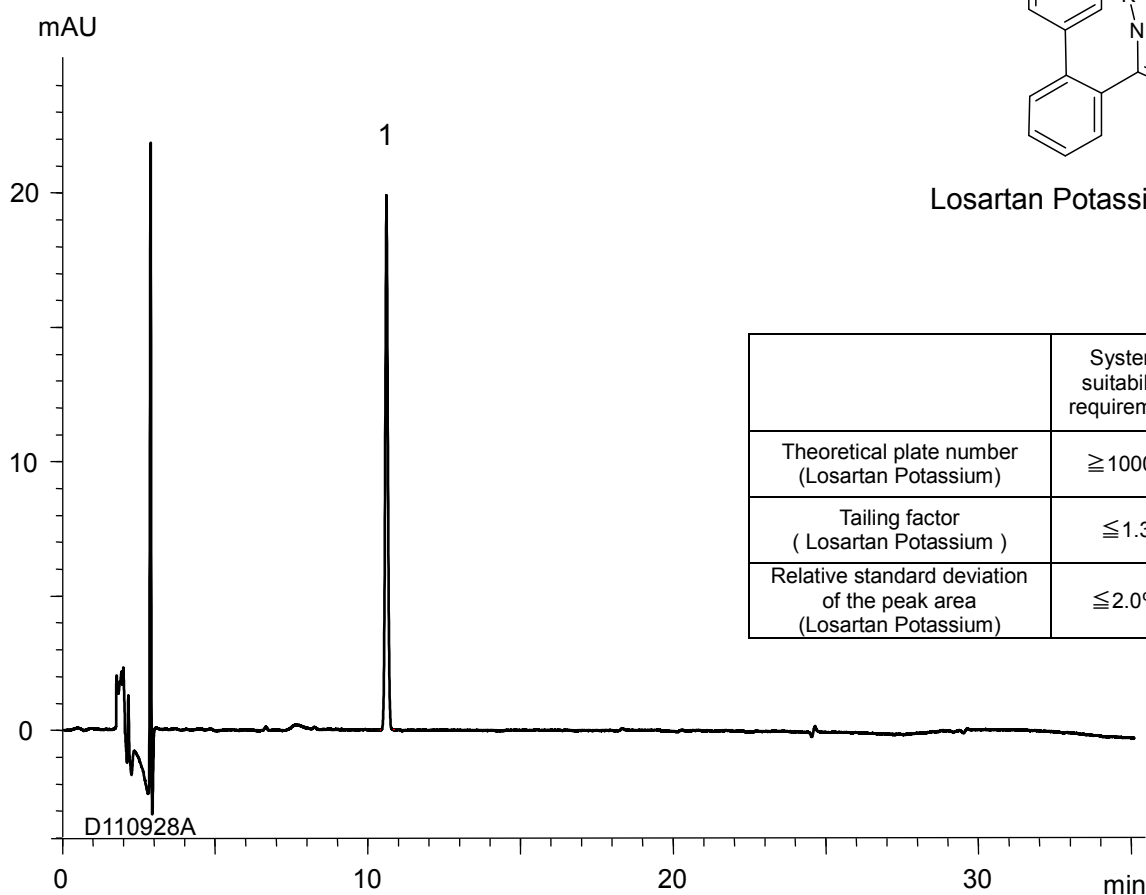


ロサルタンカリウム
Losartan Potassium

D110928A



Losartan Potassium



| | System suitability requirement | result |
|---|--------------------------------|--------|
| Theoretical plate number (Losartan Potassium) | ≥ 10000 | 66800 |
| Tailing factor (Losartan Potassium) | ≤ 1.3 | 1.07 |
| Relative standard deviation of the peak area (Losartan Potassium) | $\leq 2.0\%$ | 0.48% |

Column : YMC-Triart C18 (5 μ m, 12 nm)
250 X 4.0 mmI.D.

Eluent : A) 0.1% phosphoric acid
B) acetonitrile
25-90%B (0-25 min), 90%B (25-35 min)

Flow rate : 1.0 mL/min

Temperature : 25°C

Detection : UV at 220 nm

Injection : 10 μ L (0.003 mg/mL)

(The Japanese Pharmacopoeia 16th; Related substances)