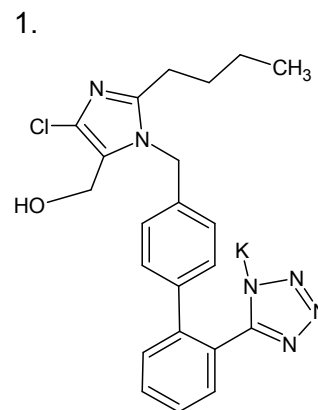
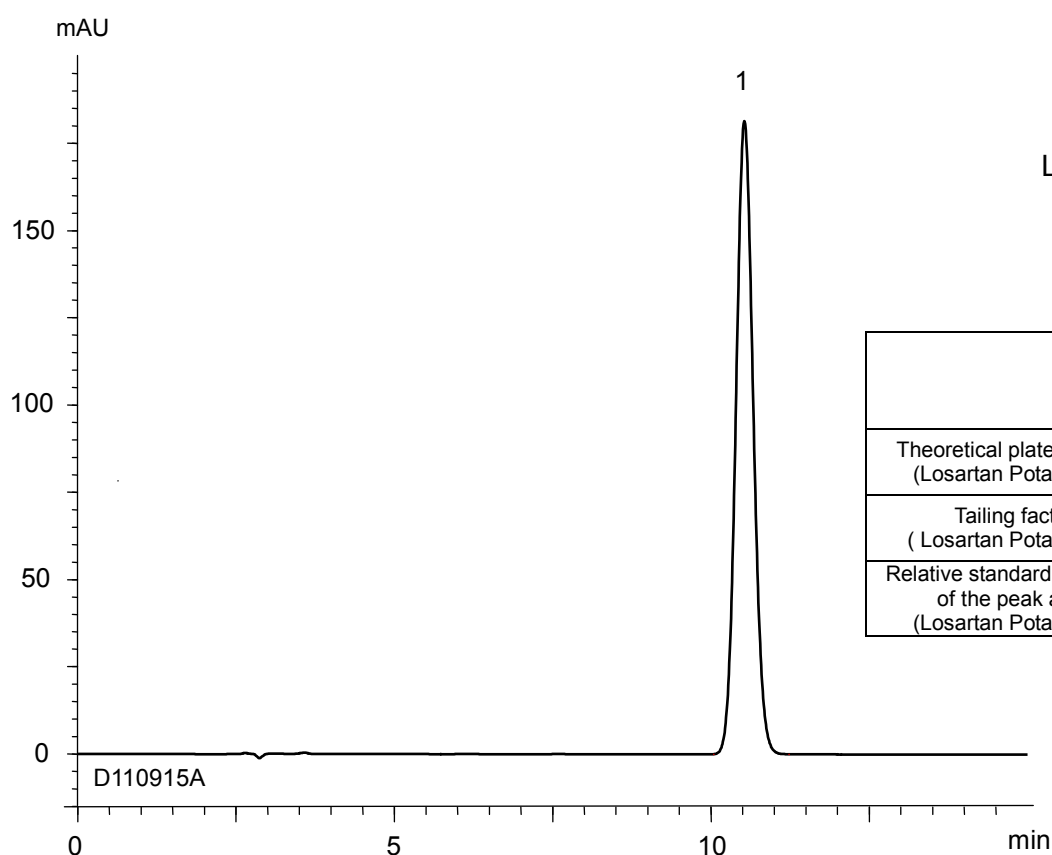


ロサルタンカリウム錠
Losartan Potassium Tablets

D110915A



Losartan Potassium



	System suitability requirement	result
Theoretical plate number (Losartan Potassium)	≥ 3000	7100
Tailing factor (Losartan Potassium)	≤ 1.5	1.08
Relative standard deviation of the peak area (Losartan Potassium)	$\leq 1.0\%$	0.86%

Column : YMC-Pack C₈ (10 μ m, 12 nm)
250 X 4.6 mm I.D.

Eluent : phosphate buffer (pH 2.5)*/acetonitrile (60/40)
*Dissolve 1.36 g of KH₂PO₄ in 900 mL of water, adjust pH 2.5 with H₃PO₄, and add water to make 1000 mL

Flow rate : 0.9 mL/min
(adjust the flow rate so that the retention time of losartan is about 10 min)

Temperature : 35°C

Detection : UV at 230 nm

Injection : 20 μ L (0.05 mg/mL)

(The draft for the Japanese Pharmacopoeia; Assay)