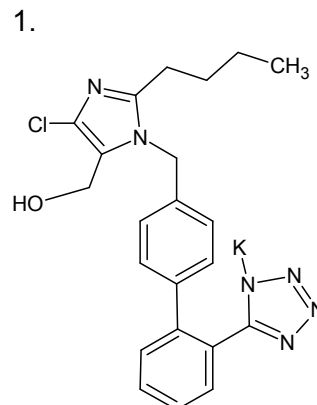
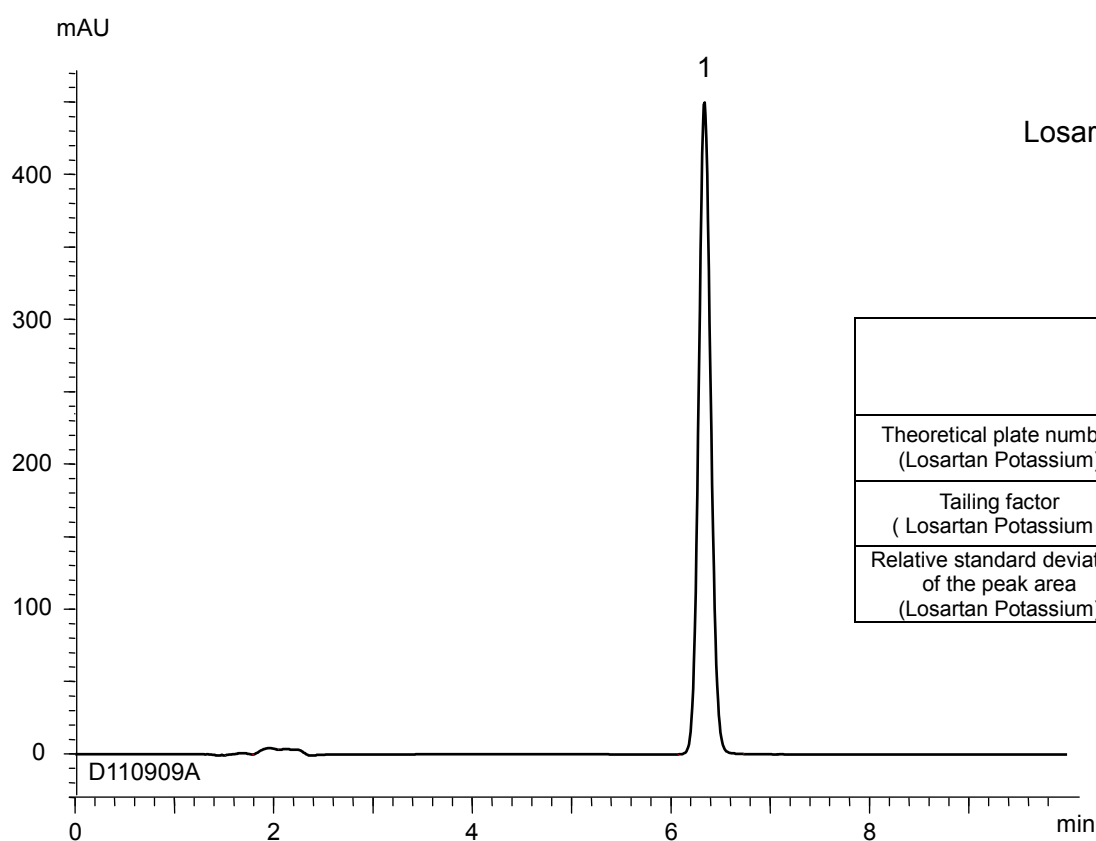


ロサルタンカリウム
Losartan Potassium

D110909A



Losartan Potassium



	System suitability requirement	result
Theoretical plate number (Losartan Potassium)	≥ 5500	12800
Tailing factor (Losartan Potassium)	≤ 1.4	1.11
Relative standard deviation of the peak area (Losartan Potassium)	$\leq 1.0\%$	0.27%

Column : YMC-Triart C18 (5 μ m, 12 nm)
250 X 4.0 mmI.D.

Eluent : 0.1% phosphoric acid/acetonitrile (60/40)

Flow rate : 1.1 mL/min
(adjust the flow rate so that the retention time of losartan is about 6 min)

Temperature : 35°C

Detection : UV at 254 nm

Injection : 10 μ L (0.25 mg/mL)
(The Japanese Pharmacopoeia 16th; Assay)