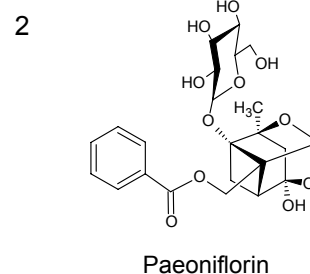
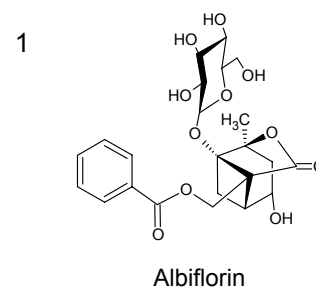
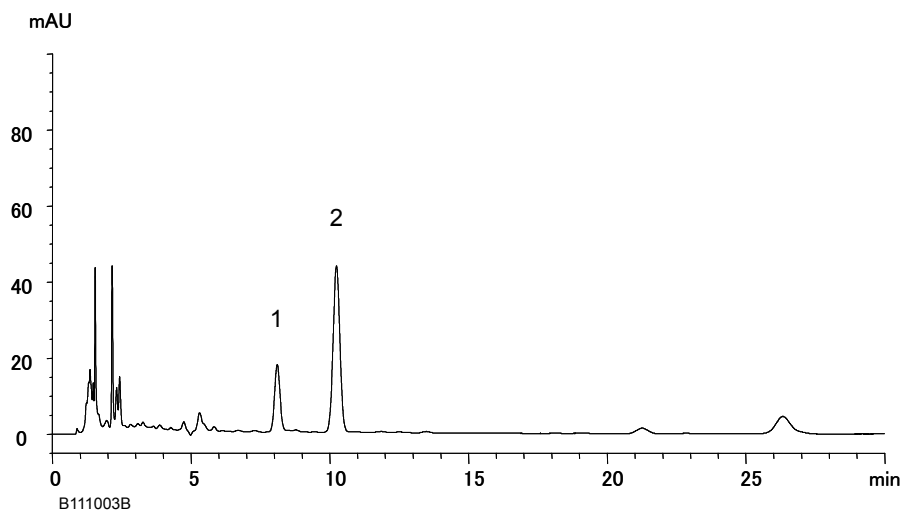


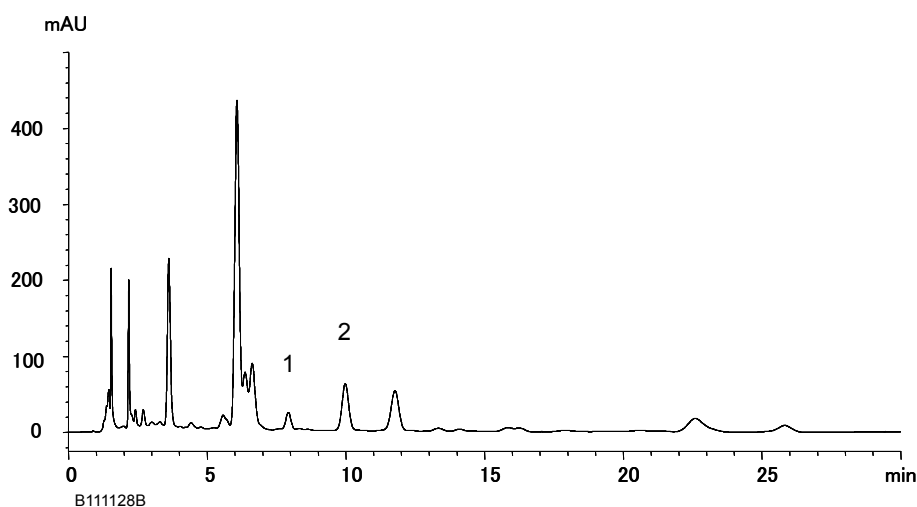
漢方製剤中のペオニフロリン
Paeoniflorin in Kampo products

B111219A

A) Toki-shakuyaku-san extract granules



B) Kakkonto extract granules



Column	: YMC-Triart C18 (5 μ m, 12 nm) 150 X 4.6 mm I.D.
Eluent	: water/acetonitrile/phosphoric acid (850/150/1)
Flow rate	: 1.1 mL/min (<i>adjust the flow rate so that the retention time of paeoniflorin is about 10 min</i>)
Temperature	: 20°C
Detection	: UV at 232 nm
Injection	: 10 μ L
Sample	: A) 50% methanol extract of a commercially available Toki-shakuyaku-san extract granules (10 mg/mL) B) 50% methanol extract of a commercially available Kakkonto extract granules (10 mg/mL)

[The Japanese Pharmacopoeia 16th; "Syakuyaku (Peony Root)", Assay]