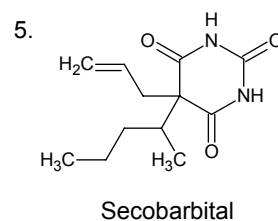
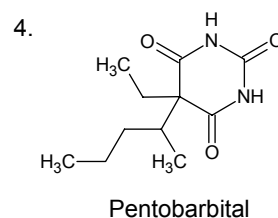
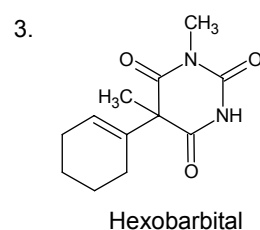
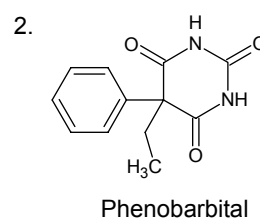
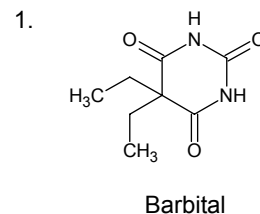
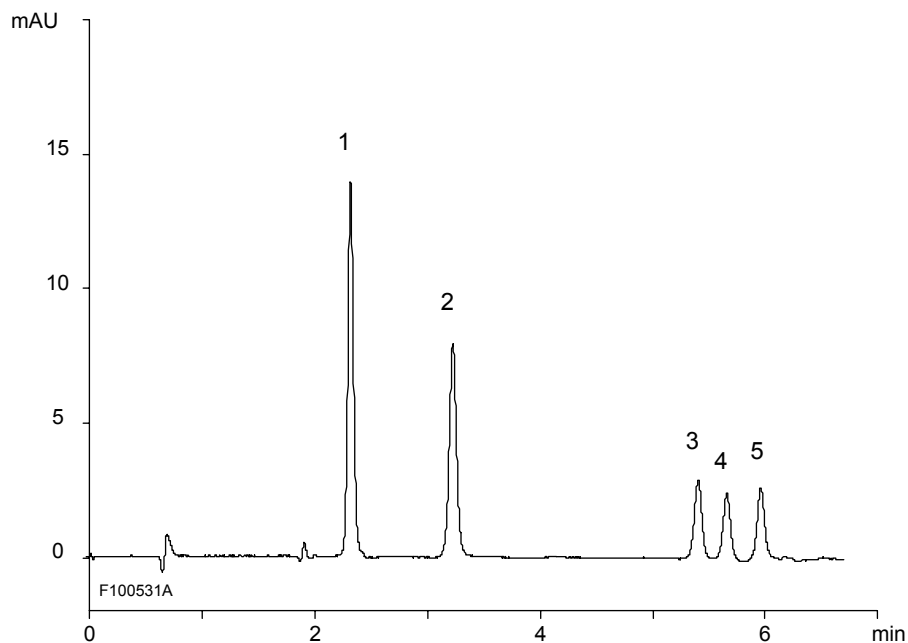
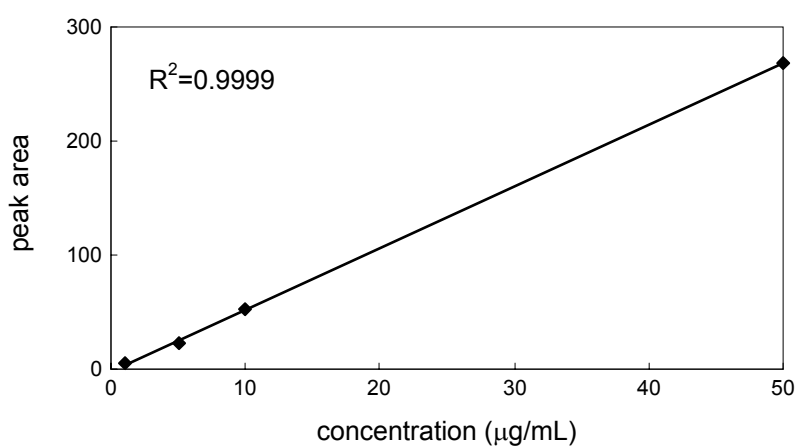


バルビツール酸系薬物  
Barbiturates

F100621A



Calibration curve of barbital



Column : YMC-Triart C18 (5 µm, 12 nm)  
50 X 2.0 mmI.D.

Eluent : A) 20 mM HCOONH<sub>4</sub>-NH<sub>3</sub> (pH 9.5)  
B) methanol  
0-90%B (0-7 min)

Flow rate : 0.2 mL/min

Temperature : 25°C

Detection : UV at 240 nm

Injection : 1 µL (10 µg/mL)