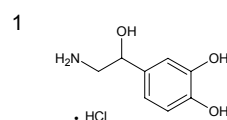
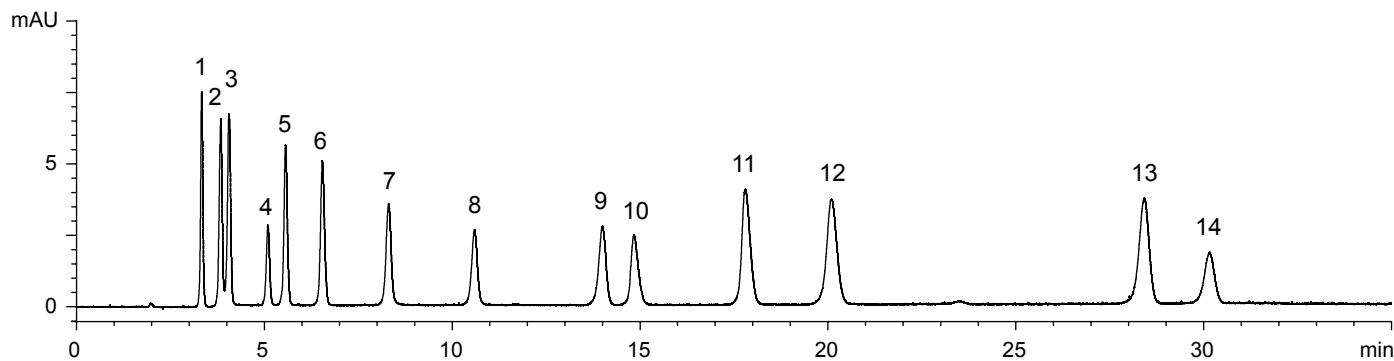
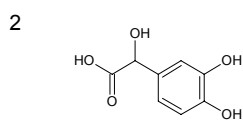


カテコールアミン、セロトニンとそれらの前駆体および代謝物の一斉分析
Simultaneous analysis of catecholamines, serotonin, and their precursors and metabolites

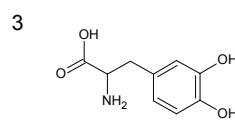
F130425D



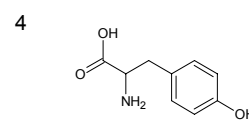
Noradrenaline hydrochloride (NA)
(Norepinephrine hydrochloride)



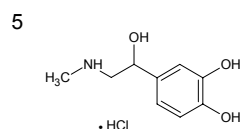
3,4-Dihydroxymandelic acid
(DOMA)



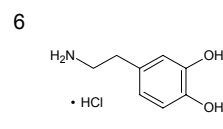
3,4-Dihydroxyphenylalanine
(DOPA)



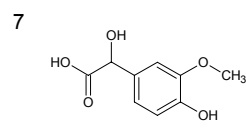
Tyrosine (Tyr)



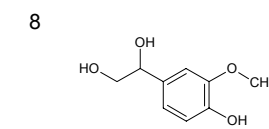
Adrenaline hydrochloride (A)
(Epinephrine hydrochloride)



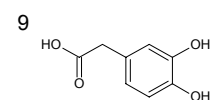
Dopamine hydrochloride (DA)



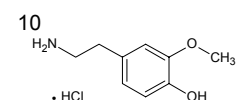
Vanillylmandelic acid (VMA)



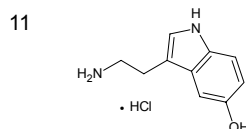
3-Methoxy-4-hydroxyphenylglycol
(MHPG)



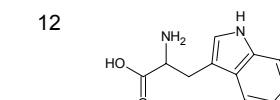
3,4-Dihydroxyphenylacetic acid
(DOPAC)



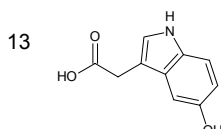
3-Methoxytyramine hydrochloride
(3MT)



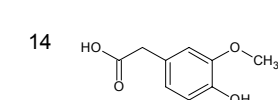
Serotonin hydrochloride
(5-Hydroxytryptamine hydrochloride, 5HT)



Tryptophan (Trp)



5-Hydroxyindoleacetic acid
(5HIAA)



Homovanillic acid (HVA)

Column : YMC-Triart PFP (3 μm, 12 nm)
150 X 3.0 mmI.D.

Eluent : A) 10 mM formic acid
B) methanol containing 10 mM formic acid
0-20%B (0-30 min), 20%B (30-35 min)

Flow rate : 0.425 mL/min

Temperature : 25°C

Detection : UV at 280 nm

Injection : 4 μL (5 μg/mL)