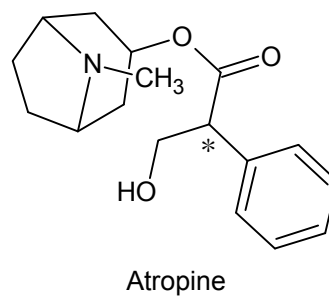
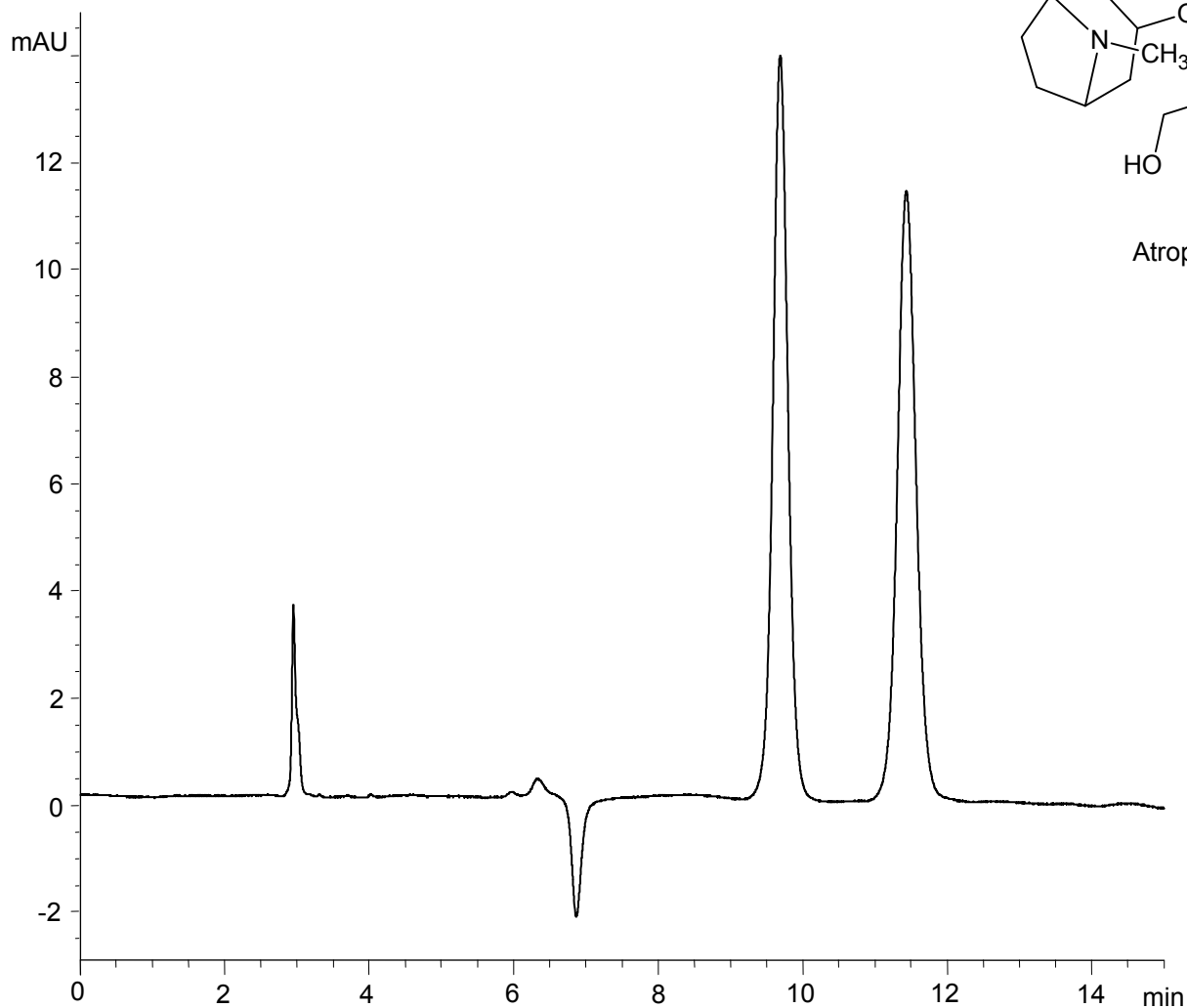


アトロピン  
Atropine

H131008C

$\alpha$	1.25
Rs	4.18



Column : CHIRAL ART Amylose-C (5  $\mu$ m)  
250 X 4.6 mm I.D.  
Eluent : *n*-hexane/ethanol/ethanolamine (87/13/0.1)  
Flow rate : 1.0 mL/min  
Temperature : 25°C  
Detection : UV at 230 nm  
Injection : 2  $\mu$ L (1 mg/mL)