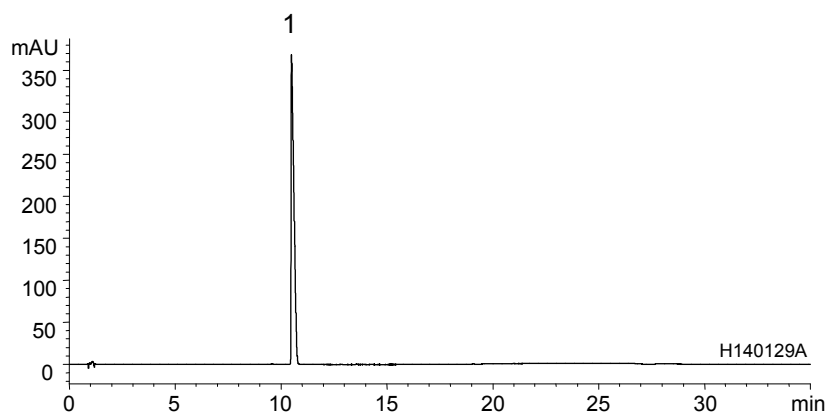


アリピプラゾール (米国薬局方記載条件)  
Aripiprazole (The United States Pharmacopeia)

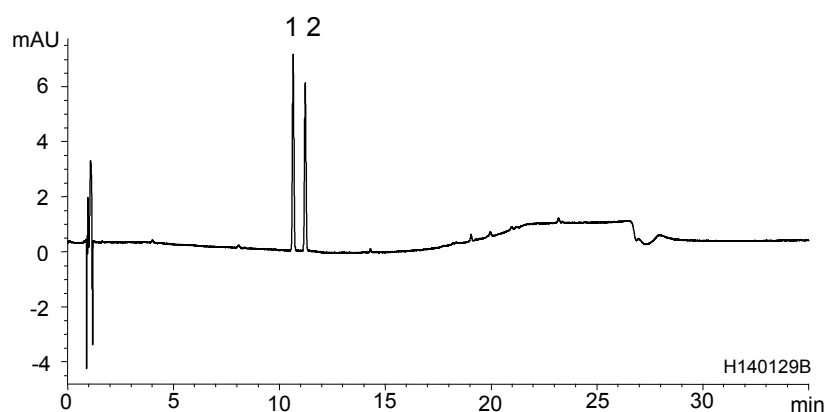
H140204A

(A) Standard solution<sup>\*1</sup>, Sample solution<sup>\*1</sup>  
(0.1 mg/mL Aripiprazole)

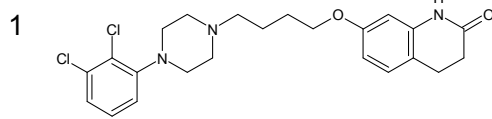


	System suitability requirement	Result
Relative standard deviation of the peak area (Aripiprazole)	≤ 1.0%	0.13%

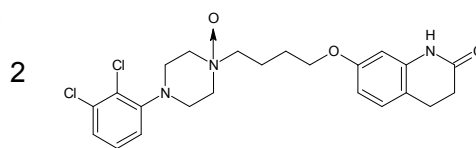
(B) System suitability solution<sup>\*1</sup>  
(1.0 μg/mL Aripiprazole, 1.0 μg/mL Aripiprazole related compound F)



	System suitability requirement	Result
Tailing factor (Aripiprazole)	≤ 1.5	1.03
Resolution (1,2)	≥ 2.0	4.49



Aripiprazole



Aripiprazole related compound F

Column : YMC-Pack ODS-A (3 μm, 12 nm)  
100 X 4.6 mmI.D.

Eluent : A) acetonitrile/0.05 % TFA (10/90)  
B) acetonitrile/0.05 % TFA (90/10)  
20%B (0-2 min), 20-35%B (2-10 min), 35-90%B (10-20 min), 90%B (20-25 min),  
90-20%B (25-26 min), 20%B (26-35 min)

Flow rate : 1.2 mL/min

Temperature : 25°C

Detection : UV at 254 nm

Injection : 20 μL

(The United States Pharmacopeia 36th; Assay, Impurities)

<sup>\*1</sup> All solutions were prepared from aripiprazole and aripiprazole related compound F supplied as a reagent for laboratory use.