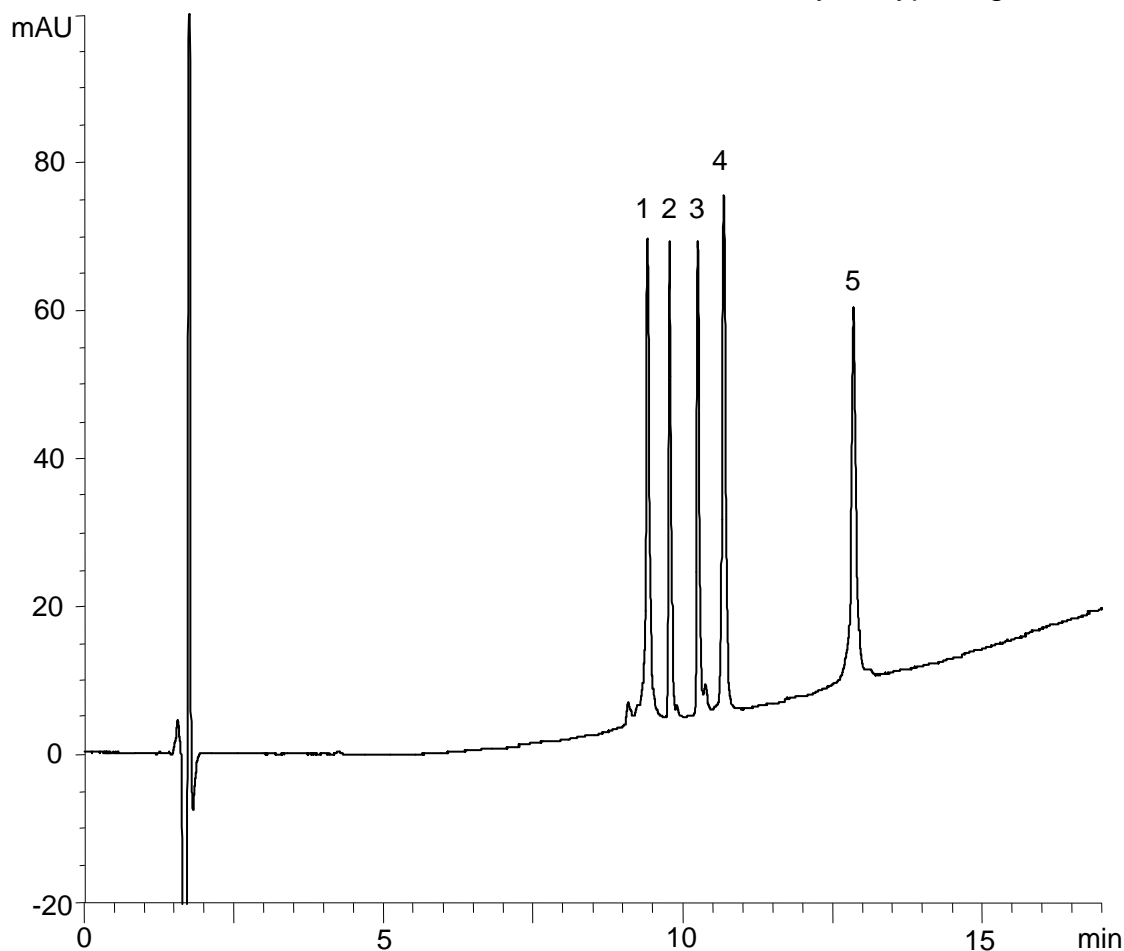


ペプチドおよびタンパク質 (MW 4,300 - 25,700)

Peptides and proteins (MW 4,300 - 25,700)

H140219D

- | | |
|-----------------------------------|-------------|
| 1. Cytochrome c | (MW 12,400) |
| 2. Insulin | (MW 5,700) |
| 3. Amyloid β protein (1-40) | (MW 4,300) |
| 4. Lysozyme | (MW 14,000) |
| 5. α -Chymotrypsinogen A | (MW 25,700) |



Column : Meteoric Core C18 BIO (2.7 μ m, 16 nm)
150 X 2.1 mm I.D.

Eluent : A) water/TFA (100/0.1)
B) acetonitrile/TFA (100/0.1)
25-70%B (0-15 min), 70%B (15-17 min)

Flow rate : 0.2 mL/min

Temperature : 40°C

Detection : UV at 220 nm

Injection : 2 μ L (0.05-0.2 mg/mL)

Pressure : 12.8-16.1 MPa (1860-2330 psi)