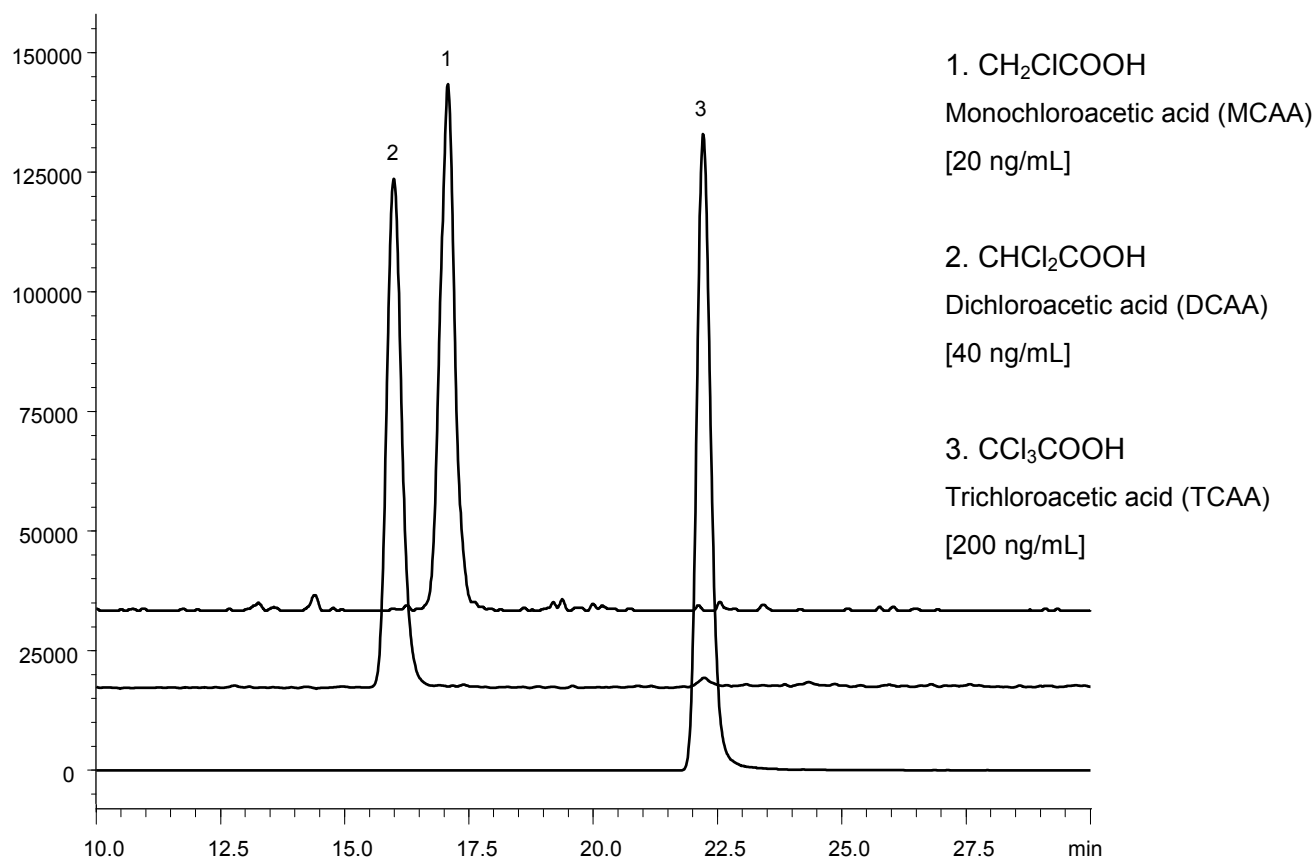


## LC/MSによるハロ酢酸一斉分析

Simultaneous separation of haloacetic acids by LC/MS

P120126A



Courtesy of J. Watanabe, SHIMADZU CORPORATION

Column : YMC-Triart C18 (3 μm, 12 nm)  
150 X 4.6 mm I.D.

Eluent : A) water/formic acid (100/0.2)  
B) methanol  
5-100%B (0-38 min)

Flow rate : 0.2 mL/min

Temperature : 30°C

Detection : Shimadzu LCMS-8030, ESI, Negative, MRM  
Monochloroacetic acid (m/z 139.1/35.1)  
Dichloroacetic acid (m/z 127.1/83.1)  
Trichloroacetic acid (m/z 207.0/117.0)

Injection : 50 μL