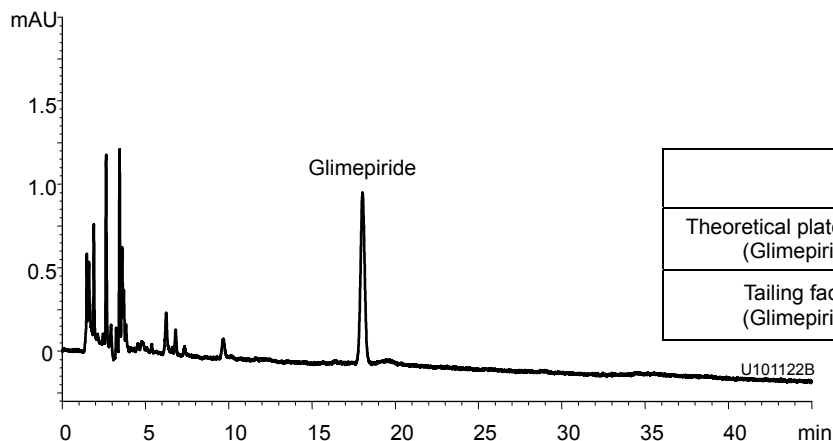


グリメピリド

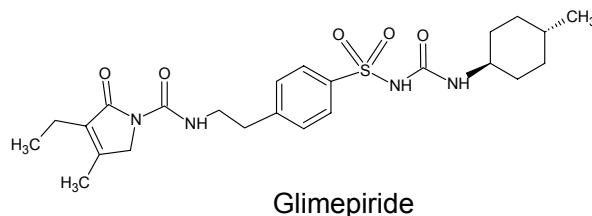
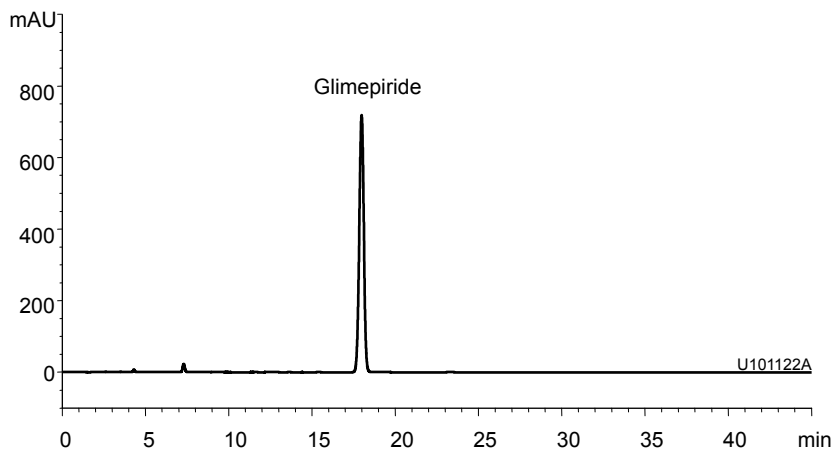
Glimepiride

U101124A

A) Standard solution\*  
(0.0002 mg/mL Glimepiride)



B) Sample solution\*  
(0.2 mg/mL Glimepiride)



Column : J'sphere ODS-M80 (4  $\mu$ m, 8 nm)  
250 X 4.0 mm I.D.

Eluent : phosphate buffer (pH 2.5)/acetonitrile (50/50)  
*phosphate buffer : dissolve 0.5 g of NaH<sub>2</sub>PO<sub>4</sub> in 500 mL water and adjust pH 2.5 with H<sub>3</sub>PO<sub>4</sub>*

Flow rate : 1.0 mL/min

Temperature : 25°C

Detection : UV at 228 nm

Injection : 20  $\mu$ L

(The draft for the Japanese Pharmacopoeia; Related substances)

\* All standard and sample solutions were prepared from Glimepiride supplied as a reagent for laboratory use.